

[Go to Product page](#)

Datasheet for ABIN667632

**CTH Protein (AA 1-405) (His tag)****1** Image

## Overview

Quantity:	100 µg
Target:	CTH
Protein Characteristics:	AA 1-405
Origin:	Human
Source:	Escherichia coli (E. coli)
Protein Type:	Recombinant
Purification tag / Conjugate:	This CTH protein is labelled with His tag.
Application:	SDS-PAGE (SDS)

## Product Details

Characteristics:	CTH, 1-405aa, Human, His tag, E.coli
Purity:	> 95 % by SDS - PAGE

## Target Details

Target:	CTH
Alternative Name:	CTH ( <a href="#">CTH Products</a> )
Background:	CTH (Cystathionine gamma-lyase or cystathionase) belongs to the trans-sulfuration enzymes family. This protein is an enzyme which breaks down cystathionine into cysteine and alpha-ketobutyrate. CTH catalyzes the last step in the transsulfuration pathway from methionine to cysteine. Recombinant human CTH protein, fused to His-tag at N-terminus, was expressed in E.coli and purified by using conventional chromatography techniques. Synonyms: Cystathionine

## Target Details

gamma-lyase, Cystathionine gamma-lyase, Gamma-cystathionase. NCBI no.: NP\_001893

Molecular Weight: 46.7kDa (425aa), confirmed by MALDI-TOF

Pathways: [ER-Nucleus Signaling](#), [Warburg Effect](#)

## Application Details

Restrictions: For Research Use only

## Handling

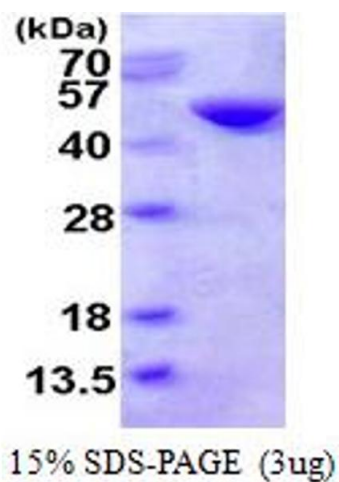
Format: Liquid

Concentration: 1mg/ml (determined by Bradford assay)

Buffer: Liquid. In 20mM Tris-HCl buffer (pH 8.0) containing 2mM DTT, 10% glycerol, 100mM NaCl

Storage: 4 °C

## Images



### SDS-PAGE

Image 1.