



[Go to Product page](#)

Datasheet for ABIN667639

HMGCL Protein (AA 28-325) (His tag)

1 Image

Overview

Quantity:	100 µg
Target:	HMGCL
Protein Characteristics:	AA 28-325
Origin:	Human
Source:	Escherichia coli (E. coli)
Protein Type:	Recombinant
Purification tag / Conjugate:	This HMGCL protein is labelled with His tag.
Application:	SDS-PAGE (SDS)

Product Details

Characteristics:	HMGCL, 28-325aa , Human, His tag, E.coli
Purity:	> 85 % by SDS - PAGE

Target Details

Target:	HMGCL
Alternative Name:	HMGCL (HMGCL Products)
Background:	HMGCL, also known as hydroxymethylglutaryl-CoA lyase, is a mitochondrial matrix protein that belongs to the HMG-CoA lyase family. It exists as a homodimer and participates in leucine catabolism and ketogenesis, the hepatic synthesis of ketone bodies that, during fasting, provide a major source of energy for heart, brain and kidney. More specifically, it catalyzes the final step of these processes, the cleavage of 3-hydroxy-3-methylglutaryl-CoA to acetoacetic acid and

Target Details

acetyl-CoA. Recombinant human HMGCL protein, fused to His-tag at N-terminus, was expressed in E.coli. Synonyms: Hydroxymethylglutaryl-CoA lyase, 3-hydroxy-3-methylglutarate-CoA lyase, HL, HMG-CoA lyase, Hydroxymethylglutaryl-CoA lyase mitochondrial. NCBI no.: NP_000182

Molecular Weight: 34.2 kDa (323aa)

Application Details

Restrictions: For Research Use only

Handling

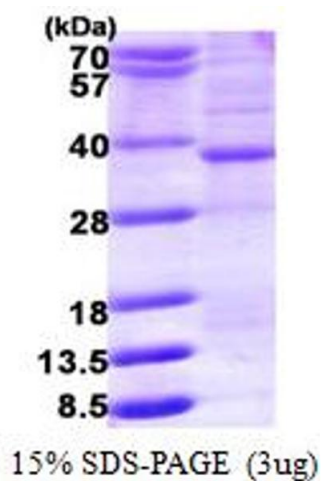
Format: Liquid

Concentration: 1.0 mg/ml (determined by Bradford assay)

Buffer: Liquid. 20mM Tris-HCl buffer (pH8.0) containing 10% glycerol, 0.4M Urea

Storage: 4 °C

Images



SDS-PAGE

Image 1.