

Datasheet for ABIN667674

ANAPC13 Protein (AA 1-74) (T7 tag)[Go to Product page](#)**1** Image

Overview

Quantity:	50 µg
Target:	ANAPC13
Protein Characteristics:	AA 1-74
Origin:	Human
Source:	Escherichia coli (E. coli)
Protein Type:	Recombinant
Purification tag / Conjugate:	This ANAPC13 protein is labelled with T7 tag.
Application:	SDS-PAGE (SDS)

Product Details

Characteristics:	ANAPC13, 1-74aa , Human, T7 tag, E.coli
Purity:	> 90 % by SDS - PAGE

Target Details

Target:	ANAPC13
Alternative Name:	ANAPC13 (ANAPC13 Products)
Background:	ANAPC13, also known as anaphase-promoting complex subunit 13, is component of the anaphase promoting complex, a large ubiquitin-protein ligase that controls cell cycle progression by regulating the degradation of cell cycle regulators such as B-type cyclins. This protein is evolutionarily conserved and is required for the integrity and ubiquitin ligase activity of the anaphase promoting complex Recombinant human ANAPC13 protein fused to T7-tag at N-

Target Details

	terminus, was expressed in E.coli and purified by using conventional chromatography.
	Synonyms: Anaphase-promoting complex subunit 13, APC13, SWM1. NCBI no.: NP_056206
Molecular Weight:	10.0 kDa (89aa) confirmed by MALDI-TOF (Molecular weight on SDS-PAGE will appear higher)

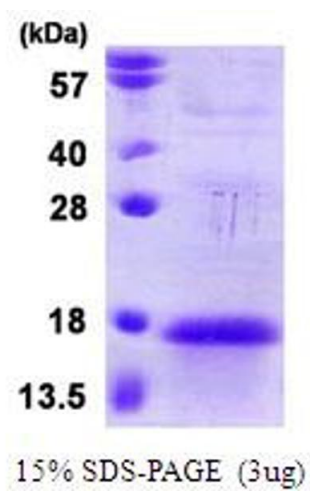
Application Details

Restrictions:	For Research Use only
---------------	-----------------------

Handling

Format:	Liquid
Concentration:	1 mg/ml (determined by Bradford assay)
Buffer:	Liquid. 20mM Tris-HCl buffer (pH8.0) containing 20% glycerol, 1mM DTT, 0.1M NaCl
Storage:	4 °C

Images



SDS-PAGE

Image 1.