

Datasheet for ABIN667706

PPID Protein (AA 1-370) (His tag)[Go to Product page](#)**1** Image

Overview

Quantity:	100 µg
Target:	PPID
Protein Characteristics:	AA 1-370
Origin:	Human
Source:	Escherichia coli (E. coli)
Protein Type:	Recombinant
Purification tag / Conjugate:	This PPID protein is labelled with His tag.
Application:	SDS-PAGE (SDS)

Product Details

Characteristics:	Cyclophilin D(PPID), 1- 370aa, Human, His-tagged, Recombinant, E.coli
Purity:	> 95 % by SDS - PAGE

Target Details

Target:	PPID
Alternative Name:	Cyclophilin D (PPID) (PPID Products)
Background:	Cyclophilin D (also known as peptidylpropyl isomerase D, PPID) is a member of peptidyl-propyl cis-trans isomerase (PPIase) family, which catalyzes the cis-trans isomerization of proline imidic peptide bonds in oligopeptides and accelerates the folding of proteins. This protein can bind to the immunosuppressant cyclosporine A and was known that its overexpression suppresses the apoptosis in cancer cells. Recombinant human cyclophilin D was expressed in

Target Details

E.coli and purified by conventional chromatography techniques. Synonyms: Peptidylprolyl isomerase D, PPID, CYPD, CYP-40, Cyclophilin D, 40 kDa peptidyl prolyl cis trans isomerase, 40 kDa peptidyl prolyl cis trans isomerase D, Cyclophilin related protein, Cyclophilin40, CyclophilinD, CYP 40, CYP40, MGC33096. Peptidylprolyl isomerase D, PPIase, PPID, Rotamase. NCBI no.: NP_005029

Molecular Weight: 42.9kDa (390aa), confirmed by MALDI-TOF.

Pathways: [Nuclear Hormone Receptor Binding](#)

Application Details

Restrictions: For Research Use only

Handling

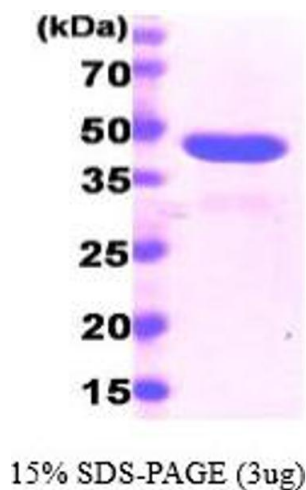
Format: Liquid

Concentration: 1 mg/ml (determined by Bradford assay)

Buffer: Liquid in Phosphate buffered saline (pH7.4), 10% glycerol

Storage: 4 °C

Images



SDS-PAGE

Image 1.