

Datasheet for ABIN667711

CPI-17 Protein (AA 1-147) (His tag)[Go to Product page](#)**1** Image

Overview

Quantity:	100 µg
Target:	CPI-17 (PPP1R14A)
Protein Characteristics:	AA 1-147
Origin:	Human
Source:	Escherichia coli (E. coli)
Protein Type:	Recombinant
Purification tag / Conjugate:	This CPI-17 protein is labelled with His tag.
Application:	SDS-PAGE (SDS)

Product Details

Characteristics:	PPP1R14A , 1-147aa, Human, His-tagged, Recombinant, E.coli
Purity:	> 95 % by SDS - PAGE

Target Details

Target:	CPI-17 (PPP1R14A)
Alternative Name:	PPP1R14A (PPP1R14A Products)
Background:	PPP1R14A (Protein phosphatase 1 regulatory subunit 14A) is a phosphorylation-dependent inhibitory protein for smooth muscle myosin phosphate. Myosin phosphatase can reverse MYL (myosin light chain) phosphorylation to induce a state of relaxation. However, during agonist-induced contraction at constant Ca ²⁺ concurrent inhibition of myosin phosphatase leads to increases in MYL phosphorylation and tension. These calcium-independent increases in myosin

Target Details

phosphorylation and tension are termed calcium sensitization. Recombinant His tagged PPP1R14A was expressed in E.coli and purified by using conventional chromatography techniques. Synonyms: CPI17, CPI-17, PPP1INL, Protein phosphatase 1, regulatory (inhibitor) subunit 14A, PPP1R14A , Protein phosphatase 1, regulatory (inhibitor) subunit 14A CPI 17, CPI 17 alpha, CPI 17alpha, CPI17, PKC potentiated inhibitory protein of PP1, Protein phosphatase 1 regulatory (inhibitor) subunit 14A, Protein phosphatase 1 regulatory subunit 14A, Regulatory subunit 14A,. NCBI no.: NP_150281

Molecular Weight: 18 kDa (167 aa), confirmed by MALDI-TOF.

Application Details

Restrictions: For Research Use only

Handling

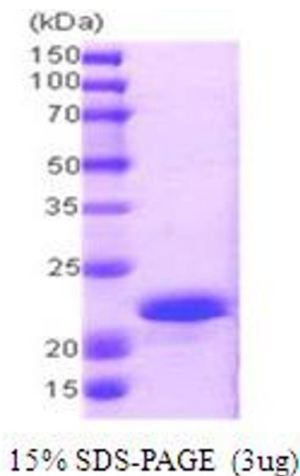
Format: Liquid

Concentration: 1 mg/ml (determined by Bradford assay)

Buffer: Liquid in 20mM Tris pH 8.0, 2mM EDTA, 1mM DTT, 10% glycerol

Storage: 4 °C

Images



SDS-PAGE

Image 1.