



[Go to Product page](#)

Datasheet for ABIN667727

VAMP8 Protein (AA 1-76) (His tag)

1 Image

Overview

Quantity:	100 µg
Target:	VAMP8
Protein Characteristics:	AA 1-76
Origin:	Human
Source:	Escherichia coli (E. coli)
Protein Type:	Recombinant
Purification tag / Conjugate:	This VAMP8 protein is labelled with His tag.
Application:	SDS-PAGE (SDS)

Product Details

Characteristics:	VAMP8, 1-76aa, Human, His tagged, Recombinant, E.coli
Purity:	> 95 % by SDS PAGE

Target Details

Target:	VAMP8
Alternative Name:	VAMP8 (VAMP8 Products)
Background:	Vehicle-associated membrane (VAMP8) ,also known as endobrevin, is the main components of a SNARE complex involved in the docking and fusion of synaptic vesicles with the presynaptic membrane. This protein plays a role in regulated enzyme secretion in pancreatic acinar cells and is involved in the abscission of the midbody during cell division, which leads to completely separate daughter cells. It is required for dense-granule secretion in platelets. Recombinant

Target Details

VAMP8 protein was expressed in E.coli and purified by using conventional chromatography techniques. Synonyms: Endobrevin, EDB, VAMP8, Vesicle-associated membrane protein 8, Vesicle-associated membrane protein 8 VAMP 5, VAMP 8, VAMP-8, VAMP5, Vesicle associated membrane protein 8. NCBI no.: NP_003752

Molecular Weight: 10.9kDa (96aa), confirmed by MALDI-TOF.

Application Details

Restrictions: For Research Use only

Handling

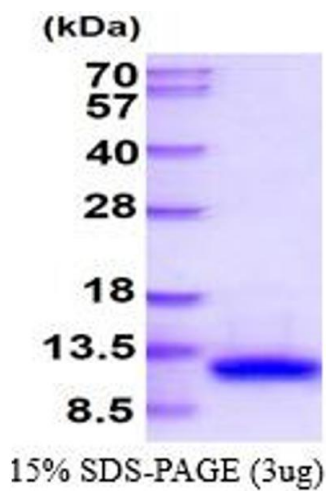
Format: Liquid

Concentration: 1 mg/ml (determined by Bradford assay)

Buffer: Liquid in 20mM Tris pH 8.0, 30% glycerol

Storage: 4 °C

Images



SDS-PAGE

Image 1.