

Datasheet for ABIN667729

UBE2L6 Protein (AA 1-152) (His tag)[Go to Product page](#)**1** Image

Overview

Quantity:	100 µg
Target:	UBE2L6
Protein Characteristics:	AA 1-152
Origin:	Human
Source:	Escherichia coli (E. coli)
Protein Type:	Recombinant
Purification tag / Conjugate:	This UBE2L6 protein is labelled with His tag.
Application:	SDS-PAGE (SDS)

Product Details

Characteristics:	UBE2L6, 1-152aa, Human, His tagged, Recombinant, E.coli
Purity:	> 90 % by SDS PAGE

Target Details

Target:	UBE2L6
Alternative Name:	UBE2L6 (UBE2L6 Products)
Background:	<p>Ubiquitin-conjugating enzyme E2L6 (UBE2L6), also known as UbCH8, is a member of the E2 ubiquitin-conjugating enzyme family. The modification of proteins with ubiquitin is an important cellular mechanism for targeting abnormal or short-lived proteins for degradation.</p> <p>Ubiquitination of a protein substrate requires the concerted action of 3 classes of enzymes: E1 ubiquitin-activating enzymes, E2 ubiquitin-conjugating enzymes, and E3 ubiquitin protein</p>

Target Details

ligases. The E2 ubiquitin-conjugating enzyme is highly similar in primary structure to the enzyme encoded by UBE2L3 gene. Recombinant human UBE2L6 protein, fused to His-tag at N-terminus, was expressed in E.coli and purified by using conventional chromatography techniques. Synonyms: UBCH8, RIG-B, Ubiquitin conjugating enzyme E2L 6, UBE2L6, Ubiquitin conjugating enzyme E2L 6 MGC40331, Retinoic acid induced gene B protein, RIG B, UBCH 8, Ubiquitin carrier protein, Ubiquitin carrier protein L6, Ubiquitin protein ligase, Ubiquitin protein ligase L6, Ubiquitin/ISG15 conjugating enzyme E2 L6. NCBI no.: NP_004214

Molecular Weight: 21.7kDa (188aa), confirmed by MALDI-TOF.

Application Details

Restrictions: For Research Use only

Handling

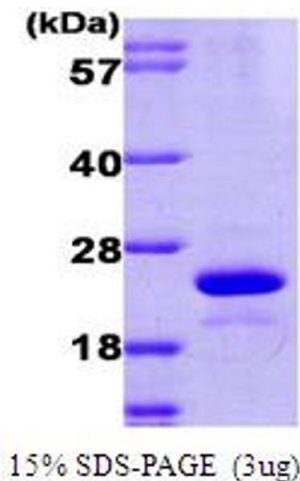
Format: Liquid

Concentration: 1 mg/ml (determined by Bradford assay)

Buffer: Liquid in 20mM Tris pH 8.0, 1mM DTT, 0.1mM PMSF, 10% glycerol

Storage: 4 °C

Images



SDS-PAGE
Image 1.