

Datasheet for ABIN667736

SMAD2 Protein (AA 1-467) (His tag)[Go to Product page](#)**1** Image

Overview

Quantity:	100 µg
Target:	SMAD2
Protein Characteristics:	AA 1-467
Origin:	Human
Source:	Escherichia coli (E. coli)
Protein Type:	Recombinant
Purification tag / Conjugate:	This SMAD2 protein is labelled with His tag.
Application:	SDS-PAGE (SDS)

Product Details

Characteristics:	SMAD2, 1- 467 aa, Human, His-tagged, Recombinant, E.coli
Purity:	> 95 % by SDS - PAGE

Target Details

Target:	SMAD2
Alternative Name:	SMAD2 (SMAD2 Products)
Background:	SMAD2(Mothers against decapentaplegic homolog 2) belongs to the SMAD family of proteins that mediate signal transduction by the TGF-beta/activin/BMP-2/4 cytokine superfamily from receptor Ser/Thr protein kinases at the cell surface to the nucleus. Phosphorylated Smad2 is then able to form a complex with Smad4 or SARA. These complexes accumulate in the cell nucleus, where they are directly participating in the regulation of gene expression. Recombinant

Target Details

SMAD2 protein, fused to His-tag at N-terminus, was expressed in E.coli and purified by using conventional chromatography techniques. Synonyms: Sma- and Mad-related protein 2 isoform 1, hMAD-2, hSMAD2, JV18, JV18-1, MADH2, MADR2, Sma- and Mad-related protein 2 isoform 1 JV181, MAD, MAD Related Protein 2, SMAD2. NCBI no.: NP_005892

Molecular Weight: 54.4 kDa (487aa)

Pathways: [Cell Division Cycle](#), [Hormone Transport](#), [Chromatin Binding](#), [Protein targeting to Nucleus](#)

Application Details

Restrictions: For Research Use only

Handling

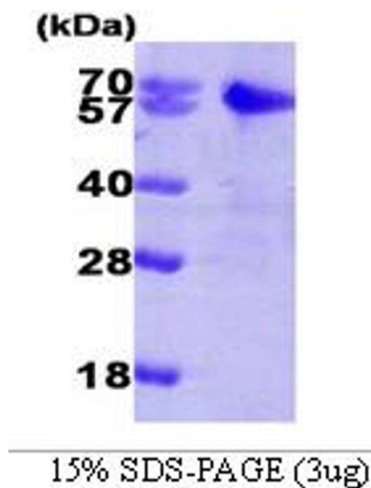
Format: Liquid

Concentration: 0.5 mg/ml (determined by Bradford assay)

Buffer: Liquid. In 20mM Tris-HCl buffer (pH8.0) containing 100 mM NaCl

Storage: 4 °C

Images



SDS-PAGE

Image 1.