



Datasheet for ABIN667740 CA2 Protein (AA 1-260)



[Go to Product page](#)

1 Image

Overview

Quantity:	100 µg
Target:	CA2
Protein Characteristics:	AA 1-260
Origin:	Human
Source:	Escherichia coli (E. coli)
Protein Type:	Recombinant
Application:	SDS-PAGE (SDS)

Product Details

Characteristics:	Carbonic anhydrase 2 , 1-260aa, Human, Recombinant, E.coli
Purity:	> 95 % by SDS - PAGE

Target Details

Target:	CA2
Alternative Name:	Carbonic anhydrase 2 (CA2 Products)

Background: Carbonic anhydrase 2 (CA2) is one of fourteen forms of human alpha carbonic anhydrases. Carbonic anhydrase catalyzes reversible hydration of carbon dioxide. CA2 is a cytosolic enzyme with the highest activity among all known CAs. Mutations in the CA2 gene result in the CA2 deficiency syndrome, an autosomal recessive disorder that produces osteopetrosis, renal tubular acidosis and cerebral calcification. Recombinant human CA2 was expressed in E.coli and purified by using conventional chromatography. Synonyms: Carbonic anhydrase 2, CA-II,

Target Details

CAC, CA 2, CA II, CA2, CAI, Car 2, Car2, Carbonate dehydratase II, Carbonic anhydrase B, Carbonic anhydrase C, Carbonic anhydrase II, Carbonic dehydratase. NCBI no.: NP_000058

Molecular Weight: 29.2 kDa (260aa), confirmed by MALDI-TOF.

Application Details

Restrictions: For Research Use only

Handling

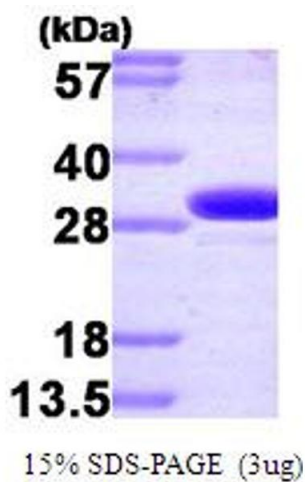
Format: Liquid

Concentration: 1 mg/ml (determined by Bradford assay)

Buffer: Liquid. In 20 mM Tris-HCl buffer (pH 8.0) containing 1mM DTT, 50mM NaCl, 10% glycerol

Storage: 4 °C

Images



SDS-PAGE

Image 1.