

Datasheet for ABIN667746

**CHMP2A Protein (AA 1-222) (His tag)**[Go to Product page](#)**1** Image

## Overview

Quantity:	100 µg
Target:	CHMP2A
Protein Characteristics:	AA 1-222
Origin:	Human
Source:	Escherichia coli (E. coli)
Protein Type:	Recombinant
Purification tag / Conjugate:	This CHMP2A protein is labelled with His tag.
Application:	SDS-PAGE (SDS)

## Product Details

Characteristics:	CHMP2A, 1-222 aa, Human, His-tagged, Recombinant, E.coli
Purity:	> 90 % by SDS - PAGE

## Target Details

Target:	CHMP2A
Alternative Name:	CHMP2A ( <a href="#">CHMP2A Products</a> )
Background:	<p>CHMP2A, also known as chromatin modifying protein 2A, belongs to the SNF7 family and it is component of the ESCRT III complex, which is required for multivesicular bodies (MVBs) formation and sorting of endosomal cargo proteins into MVBs. The MVB pathway mediates delivery of transmembrane proteins into the lumen of the lysosome for degradation.</p> <p>Recombinant CHMP2A protein, fused to His-tag at N-terminus, was expressed in E.coli and</p>

## Target Details

purified by using conventional chromatography techniques. Synonyms: BC-2, BC2, CHMP2, VPS2, VPS2A, Chromatin modifying protein 2A Charged multivesicular body protein 2a Vps2 1, hVps2 1, putative breast adenocarcinoma marker, Putative breast adenocarcinoma marker BC2, Vacuolar protein sorting associated protein 2 1. NCBI no.: NP\_055268

Molecular Weight: 27.2 kDa (242aa), confirmed by MALDI-TOF.

Pathways: [SARS-CoV-2 Protein Interactome](#)

## Application Details

Restrictions: For Research Use only

## Handling

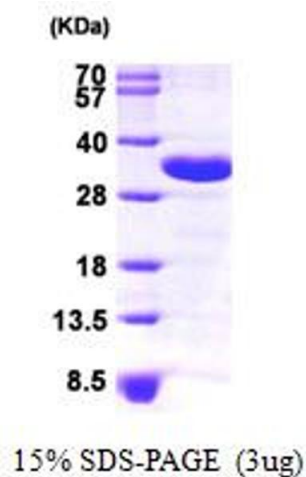
Format: Liquid

Concentration: 1 mg/ml (determined by Bradford assay)

Buffer: Liquid. In 20 mM Tris-HCl buffer (pH8.0) containing 0.1 M NaCl 1mM DTT, and 30% glycerol

Storage: 4 °C

## Images



### SDS-PAGE

Image 1.