



[Go to Product page](#)

Datasheet for ABIN667750

LIN28A Protein (AA 42-209) (His tag)

1 Image

Overview

Quantity:	50 µg
Target:	LIN28A
Protein Characteristics:	AA 42-209
Origin:	Human
Source:	Escherichia coli (E. coli)
Protein Type:	Recombinant
Purification tag / Conjugate:	This LIN28A protein is labelled with His tag.
Application:	SDS-PAGE (SDS)

Product Details

Characteristics:	Lin28, 42-209 aa, Human, His-tag, E.coli
Purity:	> 90 % by SDS - PAGE

Target Details

Target:	LIN28A
Alternative Name:	Lin28 (LIN28A Products)
Background:	Lin-28 acts as a 'translational enhancer', driving specific mRNAs to polysomes and thus increasing the efficiency of protein synthesis. It is marker of undifferentiated human embryonic stem cells and has been used to enhance the efficiency of the formation of induced pluripotent stem (iPS) cells from human fibroblasts. It has also been shown to bind to the let-7 pre-miRNA and block production of the mature let-7 microRNA in mouse embryonic stem cells.

Target Details

Recombinant Lin28 protein was expressed in E.coli and purified by using conventional chromatography techniques. Synonyms: CSDD1, FLJ12457, LIN-28, LIN28A, ZCCHC1, Zinc finger CCHC domain-containing protein 1 AL024421.Lin 28, Lin 28 homolog, Tex17, Lin28a, Lin 28 homolog (C, elegans), Lin 28 homolog A, RNA binding protein lin 28, Zinc finger CCHC domain containing protein 1. NCBI no.: NP_078950

Molecular Weight: 21.1 kDa (191aa), confirmed by MALDI-TOF.

Pathways: [Stem Cell Maintenance](#)

Application Details

Restrictions: For Research Use only

Handling

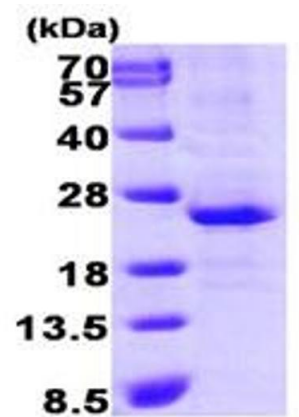
Format: Liquid

Concentration: 0.5 mg/ml (determined by Bradford assay)

Buffer: Liquid. In 20mM Tris-HCl buffer (pH8.0) containing 10% glycerol,0.1M NaCl

Storage: 4 °C

Images



15% SDS-PAGE (3ug)

SDS-PAGE

Image 1.