

Datasheet for ABIN667777

**Apolipoprotein M Protein (APOM) (AA 23-188) (His tag)**[Go to Product page](#)**1** Image

## Overview

Quantity:	50 µg
Target:	Apolipoprotein M (APOM)
Protein Characteristics:	AA 23-188
Origin:	Human
Source:	Escherichia coli (E. coli)
Protein Type:	Recombinant
Purification tag / Conjugate:	This Apolipoprotein M protein is labelled with His tag.
Application:	SDS-PAGE (SDS)

## Product Details

Characteristics:	APOM, 23-188aa, Human, His tag, E.coli
Purity:	> 90 % by SDS-PAGE

## Target Details

Target:	Apolipoprotein M (APOM)
Alternative Name:	APOM ( <a href="#">APOM Products</a> )
Background:	Apolipoproteins are protein components of plasma lipoproteins. APOM is a member of the lipocalin family of proteins. APOM is exclusively expressed in kidney tubular epithelial cells and liver hepatocytes. APOM is secreted through the plasma membrane but remains membrane-bound, where it is involved in lipid transport. It is important for the formation of prebeta-HDL and cholesterol efflux to HDL, and thereby inhibits formation of atherosclerotic lesions. The

Target Details

concentration of APOM in plasma strongly correlates with total cholesterol. Low concentrations of APOM in plasma are associated with diabetes. Recombinant human APOM protein was expressed in E.coli and purified by using conventional chromatography techniques. Synonyms: G3a, HSPC336, NG20, Apolipoprotein M Apo M, ApoM, G3A, MGC22400, NG20 like protein, Protein G3a. NCBI no.: NP\_061974

Molecular Weight: 20.9 kDa (187aa), confirmed by MALDI-TOF.

Application Details

Restrictions: For Research Use only

Handling

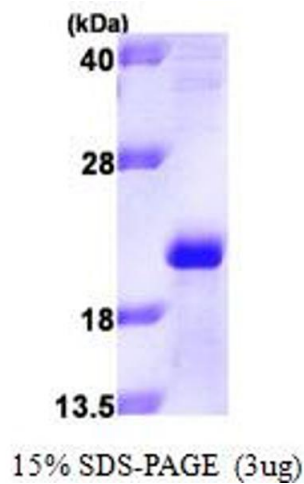
Format: Liquid

Concentration: 1 mg/ml (determined by Bradford assay)

Buffer: Liquid. In 20mM Tris-HCl buffer(pH 8.0) containing 10% glycerol, 1mM DTT.

Storage: 4 °C

Images



SDS-PAGE

Image 1.