

Datasheet for ABIN667803
tau Protein (AA 1-352) (His tag)[Go to Product page](#)

1 Image

Overview

Quantity:	50 µg
Target:	tau
Protein Characteristics:	AA 1-352
Origin:	Human
Source:	Escherichia coli (E. coli)
Protein Type:	Recombinant
Purification tag / Conjugate:	This tau protein is labelled with His tag.
Application:	SDS-PAGE (SDS)

Product Details

Characteristics:	Tau, 1-352aa, Human, His tag, E.coli
Purity:	> 85 % by SDS - PAGE

Target Details

Target:	tau
Alternative Name:	Tau (tau Products)
Background:	<p>MAPT, also known as TAU, is a neuronal microtubule associated protein found predominantly on axons. The function of this protein is to promote tubulin polymerisation and stabilise microtubules, but it also serves to link certain signalling pathways to the cytoskeleton. MAPT, in its hyperphosphorylated form, is the major component of paired helical filaments (PHF) and neurofibrillary lesions in Alzheimer's disease (AD) brain. Recombinant human MAPT protein,</p>

Target Details

fused to His-tag at N-terminus, was expressed in E.coli and purified by using conventional chromatography techniques. Synonyms: TAU, DDPAC, FTDP-17, MAPTL, MSTD, MTBT1, MTBT2, PPND, Microtubule-associated protein tau. NCBI no.: NP_058525

Molecular Weight: 38.9 kDa (372aa) confirmed by MALDI-TOF (Real molecular weight on SDS-PAGE will be shift up)

Application Details

Restrictions: For Research Use only

Handling

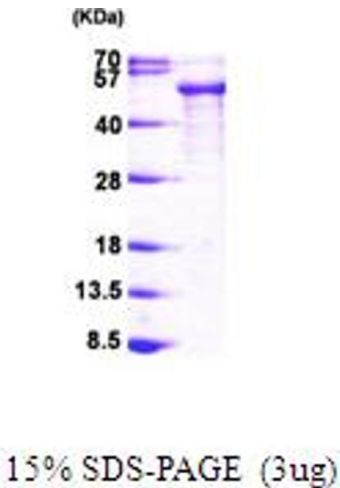
Format: Liquid

Concentration: 0.5 mg/ml (determined by Bradford assay)

Buffer: Liquid. In 20 mM Tris-HCl buffer (pH8.0) containing 0.2M Nacl, 1mM DTT, 10% glycerol

Storage: 4 °C

Images



SDS-PAGE

Image 1.