

Datasheet for ABIN667809

**EIF4E Protein (AA 1-217) (His tag)**[Go to Product page](#)**1** Image

## Overview

Quantity:	50 µg
Target:	EIF4E
Protein Characteristics:	AA 1-217
Origin:	Human
Source:	Escherichia coli (E. coli)
Protein Type:	Recombinant
Purification tag / Conjugate:	This EIF4E protein is labelled with His tag.
Application:	SDS-PAGE (SDS)

## Product Details

Characteristics:	EIF4E, 1-217aa, Human, His tag, E.coli
Purity:	> 85 % by SDS - PAGE

## Target Details

Target:	EIF4E
Alternative Name:	EIF4E ( <a href="#">EIF4E Products</a> )
Background:	EIF4E, a member of eukaryotic initiation factor 4 families, modulates translation of maternal mRNAs in early embryos before the onset of zygotic transcription. This protein recognizes and binds to the 7 methyl GTP cap structure of eukaryotic mRNAs, thereby mediating the initiation of translation. It facilitates ribosome binding by inducing the unwinding of the mRNAs secondary structures. Recombinant human EIF4E protein, fused to His-tag at N-terminus, was

## Target Details

expressed in E.coli and purified by using conventional chromatography. Synonyms: CBP, EIF4E1, EIF4EL1, EIF4F, Eukaryotic translation initiation factor 4E. NCBI no.: NP\_001959

Molecular Weight: 27.2 kDa(237aa), confirmed by MALDI-TOF

Pathways: [BCR Signaling](#)

## Application Details

Restrictions: For Research Use only

## Handling

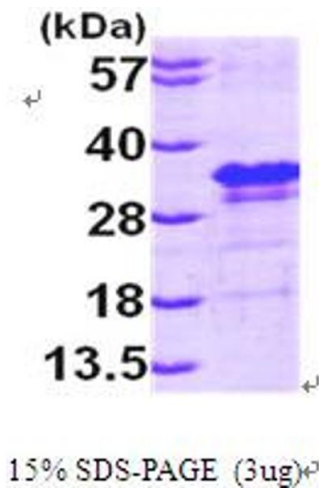
Format: Liquid

Concentration: 0.5 mg/ml (determined by Bradford assay)

Buffer: Liquid. In 20 mM Tris-HCl Buffer (pH 8.0) containing 10% Glycerol

Storage: 4 °C

## Images



### SDS-PAGE

Image 1.