

Datasheet for ABIN667810

HIV-1 p24 Protein (AA 155-321) (His tag)[Go to Product page](#)**1** Image

Overview

Quantity:	100 µg
Target:	HIV-1 p24
Protein Characteristics:	AA 155-321
Origin:	Human Immunodeficiency Virus (HIV)
Source:	Escherichia coli (E. coli)
Protein Type:	Recombinant
Purification tag / Conjugate:	This HIV-1 p24 protein is labelled with His tag.
Application:	SDS-PAGE (SDS)

Product Details

Characteristics:	HIV1-p24, 155-321aa, HIV-1, His tag, E.coli
Purity:	> 80 % by SDS - PAGE

Target Details

Target:	HIV-1 p24
Alternative Name:	HIV1-p24 (HIV-1 p24 Products)
Target Type:	Viral Protein
Background:	The HIV1 p24 protein performs highly complex orchestrated tasks during the assembly, budding maturation and infection stages of the viral replication cycle. During viral assembly, the proteins form membrane associations and self-associations that ultimately result in budding of an immature virion from the infected cell. Gag p24, the major capsid protein of the HIV-1 virion,

Target Details

has been used in clinical trials as one of the components of the HIV-1 vaccine because of the high degree of sequence conservation between different isolates. Recombinant HIV1-p24 protein, fused to His-tag at N-terminus, was expressed in E.coli and purified by using conventional chromatography. Synonyms: CA, Capsid protein p24, Group-specific antigen – p24. NCBI no.: AAA44987

Molecular Weight: 21.2kDa(188aa), confirmed by MALDI-TOF

Application Details

Restrictions: For Research Use only

Handling

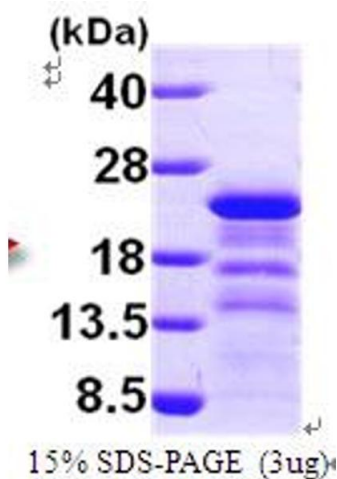
Format: Liquid

Concentration: 0.5 mg/ml (determined by Bradford assay)

Buffer: Liquid. In 20 mM Tris-HCl Buffer (pH 8.0) containing 100 mM NaCl, 0.1 mM PMSF, 10% Glycerol

Storage: 4 °C

Images



SDS-PAGE

Image 1.