

Datasheet for ABIN667816

GNPDA1 Protein (AA 1-289) (His tag)[Go to Product page](#)**1** Image

Overview

Quantity:	100 µg
Target:	GNPDA1
Protein Characteristics:	AA 1-289
Origin:	Human
Source:	Escherichia coli (E. coli)
Protein Type:	Recombinant
Purification tag / Conjugate:	This GNPDA1 protein is labelled with His tag.
Application:	SDS-PAGE (SDS)

Product Details

Characteristics:	GNPDA1, 1-289aa, Human, His tag, E.coli
Purity:	> 90 % by SDS - PAGE

Target Details

Target:	GNPDA1
Alternative Name:	GNPDA1 (GNPDA1 Products)
Background:	Glucosamine-6-phosphate isomerase 1, also known as GNPDA1, catalyzes the conversion of glucosamine-6-phosphate to fructose-6-phosphate, a reaction that under physiological conditions proceeds to the formation of fructose-6-phosphate. It exist is ubiquitously expressed with highest expression in testes, ovary and heart. In addition, GNPDA1 triggers calcium oscillations in mammalian eggs. These oscillations serve as the essential trigger for egg

Target Details

activation and early development of the embryo. Recombinant human GNPDA1 protein, fused to His-tag at N-terminus, was expressed in E.coli and purified by using conventional chromatography techniques. Synonyms: Glucosamine-6-phosphate isomerase 1, GNP1, GNPDA, GNPI, GPI, HLN, Oscillin. NCBI no.: NP_005462

Molecular Weight: 34.8 kDa (309aa), confirmed by MALDI-TOF

Application Details

Restrictions: For Research Use only

Handling

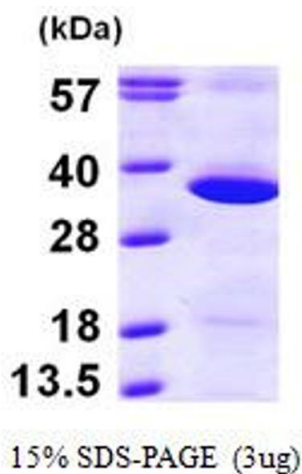
Format: Liquid

Concentration: 1 mg/ml (determined by Bradford assay)

Buffer: Liquid. In 20mM Tris-HCl buffer (pH 8.0) containing 1mM DTT, 20% glycerol, 50mM NaCl

Storage: 4 °C

Images



SDS-PAGE

Image 1.