

Datasheet for ABIN667849

RAB1B Protein (AA 1-201) (His tag)[Go to Product page](#)**1** Image

Overview

Quantity:	50 µg
Target:	RAB1B
Protein Characteristics:	AA 1-201
Origin:	Human
Source:	Escherichia coli (E. coli)
Protein Type:	Recombinant
Purification tag / Conjugate:	This RAB1B protein is labelled with His tag.
Application:	SDS-PAGE (SDS)

Product Details

Characteristics:	RAB1B, 1-201aa, Human, His tag, E.coli
Purity:	> 90 % by SDS - PAGE

Target Details

Target:	RAB1B
Alternative Name:	RAB1B (RAB1B Products)
Background:	RAB1B is a member of the RAB protein family, low molecular mass monomeric GTPases localized on the cytoplasmic surfaces of distinct membrane bound organelles. This protein functions in the early secretory pathway and is essential for vesicle transport between the endoplasmic reticulum (ER) and Golgi. Recombinant human RAB1B protein, fused to His-tag at N-terminus, was expressed in E.coli and purified by using conventional chromatography.

Target Details

Synonyms: Ras-related protein Rab-1B,. NCBI no.: NP_112243

Molecular Weight: 24.3 kDa(221aa), confirmed by MALDI-TOF

Application Details

Restrictions: For Research Use only

Handling

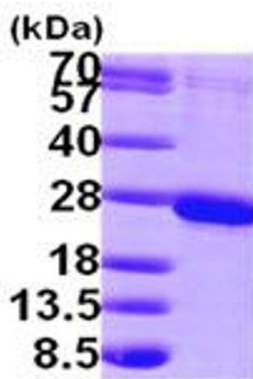
Format: Liquid

Concentration: 1 mg/ml (determined by Bradford assay)

Buffer: Liquid. In 20 mM Tris-HCl buffer (pH8.0) containing 10% Glycerol

Storage: 4 °C

Images



15% SDS-PAGE (3ug)

SDS-PAGE

Image 1.