

Datasheet for ABIN667858

PSMB5 Protein (AA 60-263) (His tag)[Go to Product page](#)**1** Image

Overview

| | |
|-------------------------------|--|
| Quantity: | 50 µg |
| Target: | PSMB5 |
| Protein Characteristics: | AA 60-263 |
| Origin: | Human |
| Source: | Escherichia coli (E. coli) |
| Protein Type: | Recombinant |
| Purification tag / Conjugate: | This PSMB5 protein is labelled with His tag. |
| Application: | SDS-PAGE (SDS) |

Product Details

| | |
|------------------|---|
| Characteristics: | PSMB5, 60-263aa, Human, His tag, E.coli |
| Purity: | > 90 % by SDS – PAGE |

Target Details

| | |
|-------------------|--|
| Target: | PSMB5 |
| Alternative Name: | PSMB5 (PSMB5 Products) |
| Background: | <p>PSMB5 is a member of the proteasome B-type family that is a 20S core beta subunit in the proteasome. This catalytic subunit is not present in the immunoproteasome and is replaced by catalytic subunit 3i (proteasome beta 8 subunit). PSMB5 has an ATP dependent proteolytic activity and involved in an ATP/ubiquitin dependent non lysosomal proteolytic pathway.</p> <p>Recombinant human PSMB5 protein, fused to His-tag at N-terminus, was expressed in E.coli</p> |

Target Details

and purified by using conventional chromatography techniques. Synonyms: Proteasome (prosome macropain) subunit beta type 5., LMPX, MB1, MGC104214, X. NCBI no.: NP_002788

Molecular Weight: 26.7 kDa (241aa), confirmed by MALDI-TOF

Pathways: [Mitotic G1-G1/S Phases](#), [DNA Replication](#), [Synthesis of DNA](#)

Application Details

Restrictions: For Research Use only

Handling

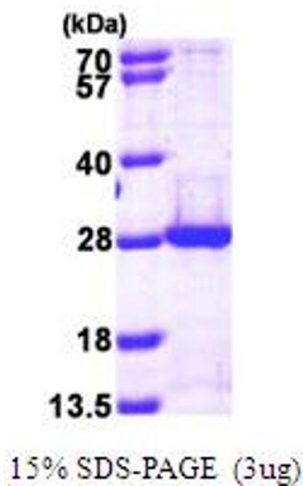
Format: Liquid

Concentration: 0.25 mg/ml (determined by Bradford assay)

Buffer: Liquid. In 20mM Tris-HCl buffer(pH 8.0) containing 20% glycerol, 5mM DTT, 0.2M NaCl.

Storage: 4 °C

Images



SDS-PAGE

Image 1.