

Datasheet for ABIN667876

**RERG Protein (AA 1-199) (His tag)**[Go to Product page](#)**1** Image

## Overview

Quantity:	50 µg
Target:	RERG
Protein Characteristics:	AA 1-199
Origin:	Human
Source:	Escherichia coli (E. coli)
Protein Type:	Recombinant
Purification tag / Conjugate:	This RERG protein is labelled with His tag.
Application:	SDS-PAGE (SDS)

## Product Details

Characteristics:	RERG, 1-199aa, Human, His tag, E.coli
Purity:	> 85 % by SDS - PAGE

## Target Details

Target:	RERG
Alternative Name:	RERG ( <a href="#">RERG Products</a> )
Background:	RERG is a 199 amino acid protein that localizes in the cytoplasm and belongs to the Ras subfamily of small GTPases. RERG is expressed in pancreas, liver, skin, lung, brain, kidney and heart tissue. It is critical mediators of diverse cell signaling pathways, including those leading to cell proliferation, cytoskeletal organization and secretion. Recombinant human RERG protein, fused to His-tag at N-terminus, was expressed in E.coli and purified by using conventional

## Target Details

chromatography techniques. Synonyms: Ras-related and estrogen-regulated growth inhibitor, MGC15754. NCBI no.: NP\_116307

Molecular Weight: 24.7 kDa (219aa), confirmed by MALDI-TOF (Molecular weight on SDS-PAGE will appear higher)

## Application Details

Restrictions: For Research Use only

## Handling

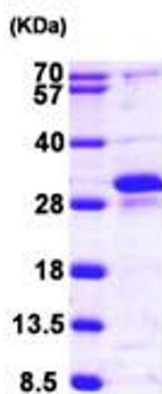
Format: Liquid

Concentration: 0.25 mg/ml (determined by Bradford assay)

Buffer: Liquid. In 20 mM Tris-HCl buffer (pH8.0) containing 0.2M NaCl, 5mM DTT, 50% glycerol

Storage: 4 °C

## Images



15% SDS-PAGE (3ug)

### SDS-PAGE

Image 1.