

Datasheet for ABIN667885

**EEF1D Protein (AA 1-281) (His tag)**[Go to Product page](#)**1** Image

## Overview

Quantity:	50 µg
Target:	EEF1D
Protein Characteristics:	AA 1-281
Origin:	Human
Source:	Escherichia coli (E. coli)
Protein Type:	Recombinant
Purification tag / Conjugate:	This EEF1D protein is labelled with His tag.
Application:	SDS-PAGE (SDS)

## Product Details

Characteristics:	EEF1D, 1-281aa, Human, His tag, E.coli
Purity:	> 90 % by SDS - PAGE

## Target Details

Target:	EEF1D
Alternative Name:	EEF1D ( <a href="#">EEF1D Products</a> )
Background:	Eukaryotic translation elongation factor 1 delta, also known as EEF1D, is a subunit of the elongation factor-1 complex, which is responsible for the enzymatic delivery of aminoacyl tRNAs to the ribosome. This subunit functions as guanine nucleotide exchange factor. It is reported that this subunit interacts with HIV-1 Tat, and thus it represses the translation of host-cell, but not HIV-1, mRNAs. Overexpression of EEF1D is associated with oesophageal

Target Details

carcinoma and may adversely affect the outcome of medulloblastomas. Recombinant human EEF1D protein, fused to His-tag at N-terminus, was expressed in E.coli and purified by using conventional chromatography techniques. Synonyms: Eukaryotic translation elongation factor 1 delta, EF-1D, EF1D. NCBI no.: NP\_001951

Molecular Weight: 33.2 kDa (301aa) confirmed by MALDI-TOF (Molecular weight on SDS-PAGE will appear higher)

Application Details

Restrictions: For Research Use only

Handling

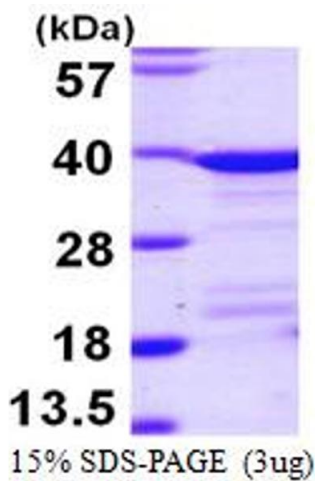
Format: Liquid

Concentration: 0.5 mg/ml (determined by Bradford assay)

Buffer: Liquid. In 20mM Tris-HCl buffer (pH 8.0) containing 1mM DTT, 10% glycerol

Storage: 4 °C

Images



SDS-PAGE  
Image 1.