

Datasheet for ABIN667906

ETFB Protein (AA 1-255) (His tag)[Go to Product page](#)**1** Image

Overview

Quantity:	50 µg
Target:	ETFB
Protein Characteristics:	AA 1-255
Origin:	Human
Source:	Escherichia coli (E. coli)
Protein Type:	Recombinant
Purification tag / Conjugate:	This ETFB protein is labelled with His tag.
Application:	SDS-PAGE (SDS)

Product Details

Characteristics:	ETFB, 1-255aa, Human, His tag, E.coli
Purity:	> 90 % by SDS - PAGE

Target Details

Target:	ETFB
Alternative Name:	ETFB (ETFB Products)
Background:	ETF (electron transfer flavoprotein) is a heterodimer of an alpha and beta subunit. The ETFB protein is electron-transfer-flavoprotein, beta polypeptide, which shuttles electrons between primary flavoprotein dehydrogenases involved in mitochondrial fatty acid and amino acid catabolism and the membrane-bound electron transfer flavoprotein ubiquinone oxidoreductase. Recombinant human ETFB protein, fused to His-tag at N-terminus, was

Target Details

expressed in E.coli and purified by using conventional chromatography. Synonyms: Electron transfer flavoprotein subunit beta, FP585, MADD. NCBI no.: NP_001976

Molecular Weight: 30.0 kDa (275aa) confirmed by MALDI-TOF

Application Details

Restrictions: For Research Use only

Handling

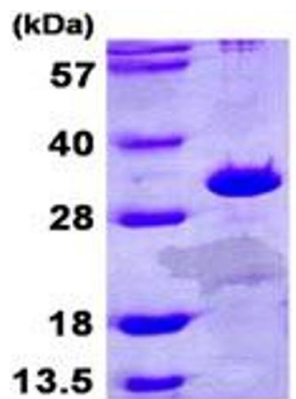
Format: Liquid

Concentration: 0.25 mg/ml (determined by Bradford assay)

Buffer: Liquid. 20mM Tris-HCl buffer (pH8.0) containing 40% glycerol, 0.1M NaCl

Storage: 4 °C

Images



15% SDS-PAGE (3ug)

SDS-PAGE

Image 1.