

Datasheet for ABIN667909

SPSB1 Protein (AA 24-233) (His tag)[Go to Product page](#)**1** Image

Overview

Quantity:	50 µg
Target:	SPSB1
Protein Characteristics:	AA 24-233
Origin:	Human
Source:	Escherichia coli (E. coli)
Protein Type:	Recombinant
Purification tag / Conjugate:	This SPSB1 protein is labelled with His tag.
Application:	SDS-PAGE (SDS)

Product Details

Characteristics:	SPSB1, 24-233aa, Human, His tag, E.coli
Purity:	> 95 % by SDS - PAGE

Target Details

Target:	SPSB1
Alternative Name:	SPSB1 (SPSB1 Products)
Background:	SPRY domain-containing SOCS box protein 1 (SPSB1), also known as SSB1, is a member of the SOCS box protein subfamily. This protein contains a central SPRY domain and a C-terminal SOCS box. Although some of the SOCS protein subfamilies function as adaptors for a large family of ubiquitin-protein isopeptide ligases to regulate certain signaling pathways, the function of the SSB subfamily remains to be determined. SPSB1 may play an important role in

Target Details

enhancing the HGF-induced Erk-Elk-1-SRE pathway. Over expression of SPSB1 exhibited no effect on the basal level or epidermal growth factor-induced SRE-luciferase activity.

Recombinant human SPSB1 protein, fused to His-tag at N-terminus, was expressed in E.coli and purified by using conventional chromatography techniques. Synonyms: SPRY domain-containing SOCS box protein 1, SSB-1, SSB1. NCBI no.: NP_079382

Molecular Weight: 26.1 kDa (231aa) confirmed by MALDI-TOF

Application Details

Restrictions: For Research Use only

Handling

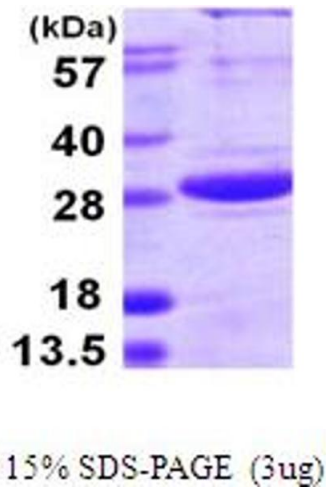
Format: Liquid

Concentration: 1 mg/ml (determined by Bradford assay)

Buffer: Liquid. In 20mM Tris-HCl buffer (pH 8.0) containing 1mM DTT, 30% glycerol, 0.1M NaCl

Storage: 4 °C

Images



SDS-PAGE

Image 1.