

Datasheet for ABIN667911  
**RHOB Protein (AA 1-193) (His tag)**



[Go to Product page](#)

1 Image

## Overview

Quantity:	50 µg
Target:	RHOB
Protein Characteristics:	AA 1-193
Origin:	Human
Source:	Escherichia coli (E. coli)
Protein Type:	Recombinant
Purification tag / Conjugate:	This RHOB protein is labelled with His tag.
Application:	SDS-PAGE (SDS)

## Product Details

Characteristics:	RhoB, 1-193aa, Human, His tag, E.coli
Purity:	> 90 % by SDS - PAGE

## Target Details

Target:	RHOB
Alternative Name:	RhoB ( <a href="#">RHOB Products</a> )
Background:	<p>Rho-related GTP-binding protein RhoB, also known as RhoB, is a member of the Rho GTP-binding protein family. RhoB mediates apoptosis in neoplastically transformed cells after DNA damage. It plays a negative role in tumorigenesis as deletion causes tumor formation.</p> <p>Recombinant human RhoB protein, fused to His-tag at N-terminus, was expressed in E.coli and purified by using conventional chromatography techniques. Synonyms: Rho-related GTP-</p>

## Target Details

binding protein RhoB, ARH6, ARHB, MST081, MSTP081, RHOH6. NCBI no.: NP\_004031

Molecular Weight: 23.9kDa (213aa), confirmed by MALDI-TOF (Molecular weight on SDS-PAGE will appear higher)

## Application Details

Restrictions: For Research Use only

## Handling

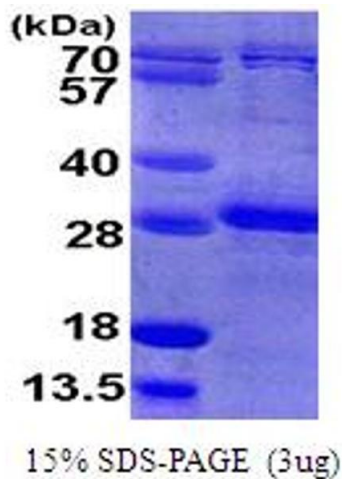
Format: Liquid

Concentration: 0.25mg/ml (determined by Bradford assay)

Buffer: Liquid. In 20mM Tris-HCl buffer (pH 8.0) containing 2mM DTT, 20% glycerol, 0.2mM NaCl

Storage: 4 °C

## Images



### SDS-PAGE

Image 1.