

Datasheet for ABIN667920

**POMC Protein (AA 27-267) (His tag)**[Go to Product page](#)**1** Image

## Overview

Quantity:	50 µg
Target:	POMC
Protein Characteristics:	AA 27-267
Origin:	Human
Source:	Escherichia coli (E. coli)
Protein Type:	Recombinant
Purification tag / Conjugate:	This POMC protein is labelled with His tag.
Application:	SDS-PAGE (SDS)

## Product Details

Characteristics:	POMC, 27-267aa, Human, His tag, E.coli
Purity:	> 85 % by SDS - PAGE

## Target Details

Target:	POMC
Alternative Name:	POMC ( <a href="#">POMC Products</a> )
Background:	Pro-opiomelanocortin preproprotein, also known as POMC, a polypeptide hormone precursor that undergoes extensive, tissue-specific, post-translational processing via cleavage by subtilisin-like enzymes known as prohormone convertases. It regulates the corticosteroid production in the adrenal cortex. Also, POMC is cleaved into ten hormone chains named NPP, gamma-MSH, ACTH, alpha-MSH, CLIP, Lipotropin beta, Lipotropin gamma, beta-MSH, beta

## Target Details

endorphin and Met-enkephalin. Defects in the gene that encodes POMC are the cause of POMC deficiency, which is characterized by red hair and adrenal insufficiency. Recombinant human POMC protein, fused to His-tag at N-terminus, was expressed in E.coli and purified by using conventional chromatography techniques. Synonyms: Pro-opiomelanocortin preproprotein, ACTH, CLIP, LPH, MSH, NPP, POC. NCBI no.: NP\_001030333

Molecular Weight: 28.9 kDa (262aa), confirmed by MALDI-TOF (molecular weight on SDS-PAGE will appear higher)

Pathways: [Metabolism of Steroid Hormones and Vitamin D](#), [Peptide Hormone Metabolism](#), [Hormone Activity](#), [Feeding Behaviour](#)

## Application Details

Restrictions: For Research Use only

## Handling

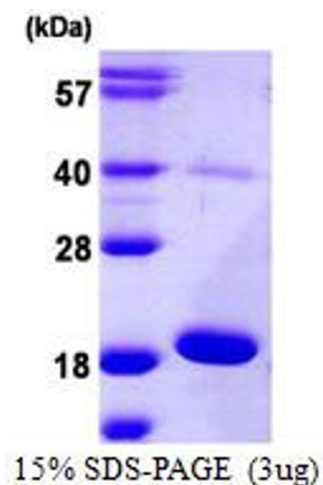
Format: Liquid

Concentration: 0.25 mg/ml (determined by Bradford assay)

Buffer: Liquid. In 20mM Tris-HCl buffer (pH 8.0) containing 1mM DTT, 50% glycerol, 0.2M NaCl

Storage: 4 °C

## Images



### SDS-PAGE

Image 1.