

Datasheet for ABIN667923

**RAB2A Protein (AA 1-212) (His tag)**[Go to Product page](#)**1** Image

## Overview

Quantity:	100 µg
Target:	RAB2A
Protein Characteristics:	AA 1-212
Origin:	Human
Source:	Escherichia coli (E. coli)
Protein Type:	Recombinant
Purification tag / Conjugate:	This RAB2A protein is labelled with His tag.
Application:	SDS-PAGE (SDS)

## Product Details

Characteristics:	RAB2A, 1-212aa, Human, His tag, E.coli
Purity:	> 90 % by SDS - PAGE

## Target Details

Target:	RAB2A
Alternative Name:	RAB2A ( <a href="#">RAB2A Products</a> )
Background:	: RAB2A(Ras-related protein Rab-2A) belongs to the small GTPase superfamily. Members of the RAB protein family are nontransforming monomeric GTP-binding proteins of the Ras superfamily that contain 4 highly conserved regions involved in GTP binding and hydrolysis. RAB proteins are also an integral part of endocytic pathways. RAB2A and RAB2B are required for protein transport from the ER to the Golgi, RAB2A is lipid-anchored to the ER-Golgi

Target Details

intermediate compartment membrane while RAB2B is lipid anchored to the cytoplasmic side of the cell membrane. RAB2A has been shown to interact with GOLGA2. Recombinant human RAB2A protein, fused to His-tag at N-terminus, was expressed in E.coli and purified by using conventional chromatography techniques. Synonyms: ras-related protein Rab-2A, RAB2. NCBI no.: NP\_002856

Molecular Weight: 26.1kDa (236aa), confirmed by MALDI-TOF

Pathways: [SARS-CoV-2 Protein Interactome](#)

Application Details

Restrictions: For Research Use only

Handling

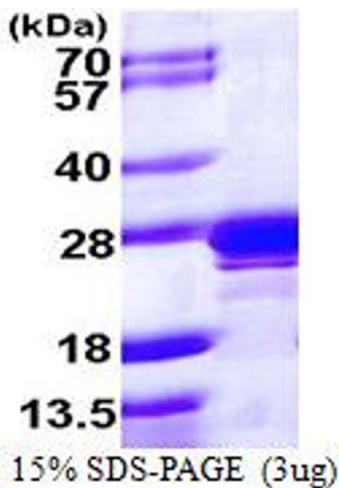
Format: Liquid

Concentration: 0.5mg/ml (determined by Bradford assay)

Buffer: Liquid. In 20mM Tris-HCl buffer (pH 8.0) containing 1mM DTT, 20% glycerol, 100mM NaCl

Storage: 4 °C

Images



**SDS-PAGE**  
Image 1.