

Datasheet for ABIN667925

CHMP2B Protein (AA 1-213) (His tag)[Go to Product page](#)**1** Image

Overview

Quantity:	100 µg
Target:	CHMP2B
Protein Characteristics:	AA 1-213
Origin:	Human
Source:	Escherichia coli (E. coli)
Protein Type:	Recombinant
Purification tag / Conjugate:	This CHMP2B protein is labelled with His tag.
Application:	SDS-PAGE (SDS)

Product Details

Characteristics:	CHMP2B, 1-213aa, Human, His tag, E.coli
Purity:	> 90 % by SDS - PAGE

Target Details

Target:	CHMP2B
Alternative Name:	CHMP2B (CHMP2B Products)
Background:	<p>CHMP2B belongs to the vacuolar sorting protein family. It is a component of the ESCRT-III complex. This complex is crucial for sorting endosomal articles into multivesicular bodies (MVBs), and are also required for the formation of these bodies. CHMP2B widely expressed in brain, heart, skeletal muscle, small intestine, pancreas, lung, placenta and leukocytes.</p> <p>Recombinant human CHMP2B protein, fused to His-tag at N-terminus, was expressed in E.coli</p>

Target Details

and purified by using conventional chromatography techniques. Synonyms: Chromatin modifying protein 2B, DMT1, VPS2B, VPS2-2, CHMP2.5, DKFZp5640123. NCBI no.: NP_054762

Molecular Weight: 26.1 kDa (233aa), confirmed by MALDI-TOF (molecular weight on SDS-PAGE will appear higher)

Application Details

Restrictions: For Research Use only

Handling

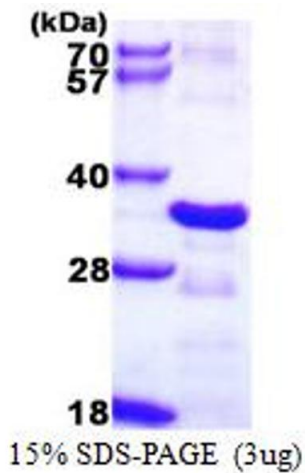
Format: Liquid

Concentration: 0.5 mg/ml (determined by Bradford assay)

Buffer: Liquid. In 20mM Tris-HCl buffer(pH 8.0) containing 10% glycerol, 1mM DTT, 0.1M NaCl.

Storage: 4 °C

Images



SDS-PAGE

Image 1.