

Datasheet for ABIN667937

ATF4 Protein (AA 1-351) (HIS-CaM)[Go to Product page](#)**1** Image

Overview

Quantity:	50 µg
Target:	ATF4
Protein Characteristics:	AA 1-351
Origin:	Human
Source:	Escherichia coli (E. coli)
Protein Type:	Recombinant
Purification tag / Conjugate:	This ATF4 protein is labelled with HIS-CaM.
Application:	SDS-PAGE (SDS)

Product Details

Characteristics:	ATF4, 1-351aa, Human, His-Cam tag, E.coli
Purity:	> 90 % by SDS - PAGE

Target Details

Target:	ATF4
Alternative Name:	ATF4 (ATF4 Products)
Background:	Activating transcription factor 4, also known as ATF4, belongs to a family of DNA-binding proteins that includes the AP-1 family of transcription factors, cAMP-response element binding proteins and CREB-like proteins. ATF4 encodes a transcription factor that was originally identified as a widely expressed mammalian DNA binding protein that could bind a tax-responsive enhancer element in the LTR of HTLV-1. Recombinant human ATF4 protein, fused

Target Details

to His-Calmodulin tag at N-terminus, was expressed in E.coli and purified by using conventional chromatography techniques. Synonyms: Activating transcription factor 4, CREB2, TXREB, CREB-2. NCBI no.: NP_001666

Molecular Weight:	56.6 kDa (510aa)
Pathways:	Thyroid Hormone Synthesis , Myometrial Relaxation and Contraction , ER-Nucleus Signaling , Unfolded Protein Response

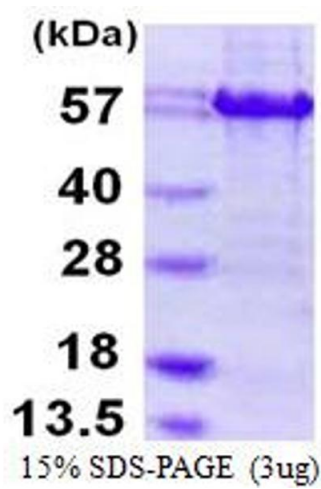
Application Details

Restrictions:	For Research Use only
---------------	-----------------------

Handling

Format:	Liquid
Concentration:	0.5 mg/ml (determined by Bradford assay)
Buffer:	Liquid. In 20mM Tris-HCl buffer (pH 8.0) containing 1mM DTT, 10% glycerol
Storage:	4 °C

Images



SDS-PAGE

Image 1.