

Datasheet for ABIN667954

RAB35 Protein (AA 1-203) (His tag)[Go to Product page](#)**1** Image

Overview

Quantity:	50 µg
Target:	RAB35
Protein Characteristics:	AA 1-203
Origin:	Human
Source:	Escherichia coli (E. coli)
Protein Type:	Recombinant
Purification tag / Conjugate:	This RAB35 protein is labelled with His tag.
Application:	SDS-PAGE (SDS)

Product Details

Characteristics:	RAB35, 1-203 aa, Human, His tag, E.coli
Purity:	> 90 % by SDS - PAGE

Target Details

Target:	RAB35
Alternative Name:	RAB35 (RAB35 Products)
Background:	RAB35, also known as ras-related protein Rab-35, is localized to the plasma membrane and endocytic compartments and controls a fast endocytic recycling pathway. Consistent with a key requirement for Rab35-regulated recycling during cell division, inhibition of Rab35 function leads to the accumulation of endocytic markers on numerous cytoplasmic vacuoles in cells that failed cytokinesis. Recombinant human RAB35 protein, fused to His-tag at N-terminus, was

Target Details

	expressed in E.coli and purified by using conventional chromatography. Synonyms: Ras-related protein Rab-35, H-ray, RAB1C, RAY. NCBI no.: NP_006852
--	---

Molecular Weight:	25.2 kDa (221aa), confirmed by MALDI-TOF
-------------------	--

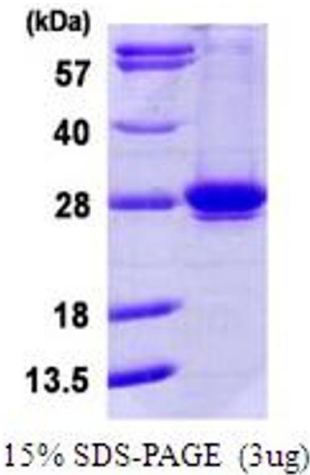
Application Details

Restrictions:	For Research Use only
---------------	-----------------------

Handling

Format:	Liquid
Concentration:	0.25 mg/ml (determined by Bradford assay)
Buffer:	Liquid. 20mM Tris-HCl buffer (pH8.0) containing 40% glycerol, 0.15M NaCl, 1mM DTT
Storage:	4 °C

Images



SDS-PAGE

Image 1.