

Datasheet for ABIN667957

MYL5 Protein (AA 1-173) (His tag)[Go to Product page](#)**1** Image

Overview

Quantity:	50 µg
Target:	MYL5
Protein Characteristics:	AA 1-173
Origin:	Human
Source:	Escherichia coli (E. coli)
Protein Type:	Recombinant
Purification tag / Conjugate:	This MYL5 protein is labelled with His tag.
Application:	SDS-PAGE (SDS)

Product Details

Characteristics:	MYL5, 1-173aa, Human, His tag, E.coli
Purity:	> 90 % by SDS - PAGE

Target Details

Target:	MYL5
Alternative Name:	MYL5 (MYL5 Products)
Background:	Myosin regulatory light chain 5, also known as MYL5, is a hexameric ATPase cellular motor protein. Myosin is composed of two heavy chains, two nonphosphorylatable alkali light chains, and two phosphorylatable regulatory light chains. MYL5 is a regulatory light chain and is expressed in fetal muscle and in adult retina, cerebellum, and basal ganglia. Reconstitution of myosin with regulatory light chain 5 or alkali light chain increases filament velocity to

Target Details

intermediate rates, and readdition of both classes of light chains fully restores the original sliding velocity. Recombinant human MYL5 protein, fused to His-tag at N-terminus, was expressed in E.coli and purified by using conventional chromatography. Synonyms: Myosin light chain 5 Isoform1,. NCBI no.: NP_002468

Molecular Weight: 22.1 kDa(197aa), confirmed by MALDI-TOF

Application Details

Restrictions: For Research Use only

Handling

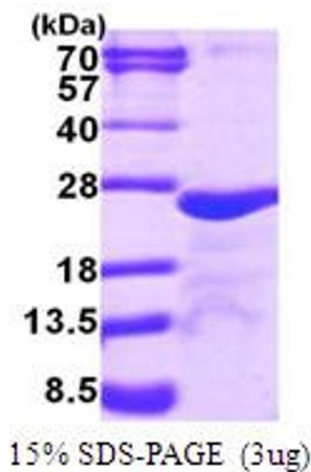
Format: Liquid

Concentration: 0.5 mg/ml (determined by Bradford assay)

Buffer: Liquid. 20mM Tris-HCl buffer (pH8.0) containing 20% glycerol, 0.1M NaCl,1mM DTT, 0.1mM PMSF

Storage: 4 °C

Images



SDS-PAGE

Image 1.