

Datasheet for ABIN667974

IDI1 Protein (AA 1-228) (His tag)[Go to Product page](#)**1** Image

Overview

Quantity:	50 µg
Target:	IDI1
Protein Characteristics:	AA 1-228
Origin:	Human
Source:	Escherichia coli (E. coli)
Protein Type:	Recombinant
Purification tag / Conjugate:	This IDI1 protein is labelled with His tag.
Application:	SDS-PAGE (SDS)

Product Details

Characteristics:	IDI1, 1-228aa, Human, His tag, E.coli
Purity:	> 90 % by SDS - PAGE

Target Details

Target:	IDI1
Alternative Name:	IDI1 (IDI1 Products)
Background:	Isopentenyl-diphosphate isomerase 1, also known as IDI1, is a member of the IPP isomerase type I family and is involved in cholesterol biosynthesis. IDI1 is a peroxisomally-localized enzyme that catalyzes the interconversion of isopentenyl diphosphate (IPP) to its highly electrophilic isomer, dimethylallyl diphosphate (DMAPP), which is the substrates for the successive reaction that results in the synthesis of farnesyl diphosphate and, ultimately,

Target Details

cholesterol. Recombinant human IDI1 protein, fused to His-tag at N-terminus, was expressed in E.coli and purified by using conventional chromatography techniques. Synonyms: Isopentenyl-diphosphate isomerase 1, IPP1, IPP11. NCBI no.: AAH57827

Molecular Weight: 28.6 kDa (248aa), confirmed by MALDI-TOF

Application Details

Restrictions: For Research Use only

Handling

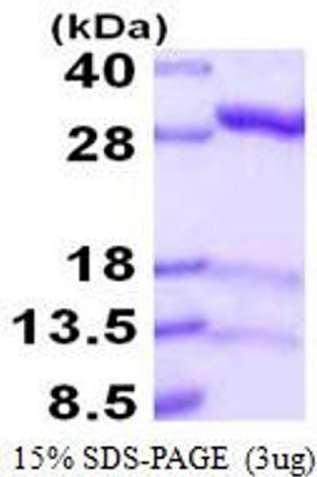
Format: Liquid

Concentration: 1 mg/ml (determined by Bradford assay)

Buffer: Liquid. In 20mM Tris-HCl buffer (pH 8.0) containing 1mM DTT, 10% glycerol, 0.1M NaCl

Storage: 4 °C

Images



SDS-PAGE

Image 1.