

Datasheet for ABIN667981

RAB34 Protein (AA 1-259) (His tag)[Go to Product page](#)**1** Image

Overview

Quantity:	50 µg
Target:	RAB34
Protein Characteristics:	AA 1-259
Origin:	Human
Source:	Escherichia coli (E. coli)
Protein Type:	Recombinant
Purification tag / Conjugate:	This RAB34 protein is labelled with His tag.
Application:	SDS-PAGE (SDS)

Product Details

Characteristics:	RAB34, 1-259aa , Human, His tag E.coli
Purity:	> 90 % by SDS - PAGE

Target Details

Target:	RAB34
Alternative Name:	RAB34 (RAB34 Products)
Background:	RAB34, also known as ras-related protein Rab34, is localized to the plasma membrane and endocytic compartments and controls a fast endocytic recycling pathway. This protein is involved in protein transport, specifically the redistribution of lysosomes to the peri-Golgi region. In fibroblasts, this protein was colocalized with actin to the membrane ruffles and membranes of relatively large vesicles adjacent to the ruffles. Recombinant human RAB34 protein, fused to

Target Details

His-tag at N-terminus, was expressed in E.coli and purified by using conventional chromatography. Synonyms: Ras-related protein Rab-34, RAB39, RAH. NCBI no.: NP_114140

Molecular Weight: 31.2 kDa (279aa), confirmed by MALDI-TOF

Application Details

Restrictions: For Research Use only

Handling

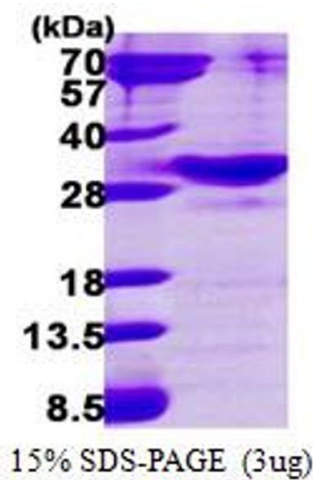
Format: Liquid

Concentration: 0.5 mg/ml (determined by Bradford assay)

Buffer: Liquid. 20mM Tris-HCl buffer (pH8.0) containing 40% glycerol, 0.1M NaCl,1mM DTT

Storage: 4 °C

Images



SDS-PAGE

Image 1.