

Datasheet for ABIN667986

KPNB1 Protein (AA 1-876) (His tag)[Go to Product page](#)**1** Image

Overview

Quantity:	50 µg
Target:	KPNB1
Protein Characteristics:	AA 1-876
Origin:	Human
Source:	Escherichia coli (E. coli)
Protein Type:	Recombinant
Purification tag / Conjugate:	This KPNB1 protein is labelled with His tag.
Application:	SDS-PAGE (SDS)

Product Details

Characteristics:	KPNB1, 1-876aa, Human, His tag, E.coli
Purity:	> 85 % by SDS - PAGE

Target Details

Target:	KPNB1
Alternative Name:	KPNB1 (KPNB1 Products)
Background:	NTF97, also known as KPNB1, is a member of the importin beta family. This protein is involved in nuclear protein import, either by associating itself with an adapter protein (for example, importin-alpha subunit which binds to nuclear localization signals (NLS) in cargo substrates), or by acting autonomously as a nuclear transport receptor (serves as NLS receptor, docking of the importin/substrate complex to the nuclear pore complex) Recombinant human KPNB1 protein,

Target Details

fused to His-tag at N-terminus, was expressed in E.coli and purified by using conventional chromatography techniques. Synonyms: Importin subunit beta-1, IMB1, Impnb, IPO1, IPOB, NTF97. NCBI no.: NP_002256

Molecular Weight: 99.6 kDa (899aa)

Pathways: [Protein targeting to Nucleus](#)

Application Details

Restrictions: For Research Use only

Handling

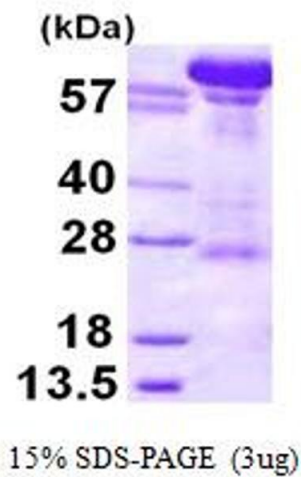
Format: Liquid

Concentration: 0.25 mg/ml (determined by Bradford assay)

Buffer: Liquid. In 20mM Tris-HCl buffer (pH 8.0) containing 1mM DTT, 30% glycerol, 0.1M NaCl

Storage: 4 °C

Images



SDS-PAGE

Image 1.