

Datasheet for ABIN668017

PAPSS1 Protein (AA 24-624) (His tag)[Go to Product page](#)**1** Image

Overview

Quantity:	100 µg
Target:	PAPSS1
Protein Characteristics:	AA 24-624
Origin:	Human
Source:	Escherichia coli (E. coli)
Protein Type:	Recombinant
Purification tag / Conjugate:	This PAPSS1 protein is labelled with His tag.
Application:	SDS-PAGE (SDS)

Product Details

Characteristics:	PAPSS1, 24-624aa, Human, His tag, E.coli
Purity:	> 85 % by SDS - PAGE

Target Details

Target:	PAPSS1
Alternative Name:	PAPSS1 (PAPSS1 Products)
Background:	PAPSS1, also known as bifunctional 3'-phosphoadenosine 5'-phosphosulfate synthase 1, is a bifunctional enzyme with both ATP sulfurylase and APS kinase activity, which mediates two steps in the sulfate activation pathway, yielding 3'-phosphoadenylylsulfate (PAPS). PAPSS1 is also involved in the biosynthesis of sulfated L-selectin ligands in endothelial cells. Recombinant human PAPSS1 protein, fused to His-tag at N-terminus, was expressed in E.coli and purified by

Target Details

	using conventional chromatography. Synonyms: Bifunctional 3'-phosphoadenosine 5'-phosphosulfate synthase 1, ATPSK1, PAPSS, SK1. NCBI no.: NP_005434
Molecular Weight:	70.9 kDa (626aa)
Pathways:	Glycosaminoglycan Metabolic Process , Ribonucleoside Biosynthetic Process

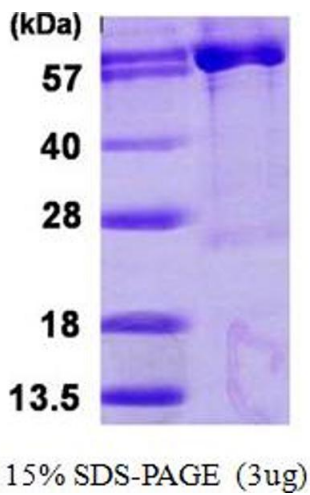
Application Details

Restrictions:	For Research Use only
---------------	-----------------------

Handling

Format:	Liquid
Concentration:	0.5 mg/ml (determined by Bradford assay)
Buffer:	Liquid. 20mM Tris-HCl buffer (pH8.0) containing 20% glycerol, 0.1M NaCl
Storage:	4 °C

Images



SDS-PAGE

Image 1.