

Datasheet for ABIN668041

**PSMB1 Protein (AA 30-241) (His tag)****1** Image[Go to Product page](#)

## Overview

Quantity:	100 µg
Target:	PSMB1
Protein Characteristics:	AA 30-241
Origin:	Human
Source:	Escherichia coli (E. coli)
Protein Type:	Recombinant
Purification tag / Conjugate:	This PSMB1 protein is labelled with His tag.
Application:	SDS-PAGE (SDS)

## Product Details

Characteristics:	PSMB1, 30-241aa, Human, His-tagged, Recombinant, E.coli
Purity:	> 95 % by SDS - PAGE

## Target Details

Target:	PSMB1
Alternative Name:	PSMB1 ( <a href="#">PSMB1 Products</a> )
Background:	PSMB1 (Proteasome subunit, beta type-1) encodes a member of the proteasome B-type family, also known as the T1B family, that is a 20S core beta subunit. This is tightly linked to the TBP (TATA-binding protein) gene in human and in mouse, and is transcribed in the opposite orientation in both species. The main function of PSMB1 is to degrade unnecessary or damaged proteins by proteolysis. Recombinant human PSMB1 protein, fused to His-tag at N-

Target Details

terminus, was expressed in E.coli and purified by using conventional chromatography.

Synonyms: Proteasome subunit, beta type-1 , PSC5, Proteasome subunit, beta type-1 FLJ25321, HC5, KIAA1838, Macropain subunit C5, Multicatalytic endopeptidase complex subunit C5, Proteasome (prosome macropain) subunit beta type 1, Proteasome beta 1 subunit, Proteasome component C5, Proteasome gamma chain, Proteasome subunit HC5, Proteasome subunit beta type 1, PSMB 1, PSMB1. NCBI no.: NP\_002784

Molecular Weight: 27.7 kDa (250aa), confirmed by MALDI-TOF.

Pathways: [Mitotic G1-G1/S Phases](#), [DNA Replication](#), [Synthesis of DNA](#)

Application Details

Restrictions: For Research Use only

Handling

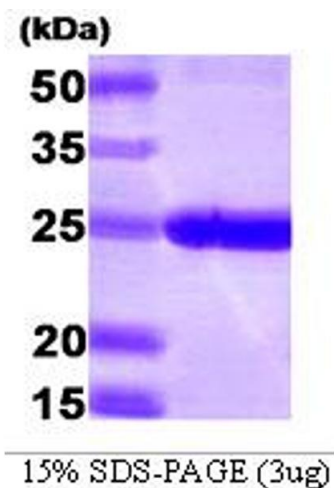
Format: Liquid

Concentration: 1 mg/ml (determined by Bradford assay)

Buffer: Liquid. In 20 mM Tris-HCl buffer (pH 8.0) containing 1 mM DTT, 10% glycerol

Storage: 4 °C

Images



**SDS-PAGE**

Image 1.