



[Go to Product page](#)

Datasheet for ABIN668049

BAALC Protein (AA 1-145) (His tag)

1 Image

Overview

Quantity:	100 µg
Target:	BAALC
Protein Characteristics:	AA 1-145
Origin:	Human
Source:	Escherichia coli (E. coli)
Protein Type:	Recombinant
Purification tag / Conjugate:	This BAALC protein is labelled with His tag.
Application:	SDS-PAGE (SDS)

Product Details

Characteristics:	BAALC, 1-145aa, Human, His tag, E.coli
Purity:	> 95 % by SDS - PAGE

Target Details

Target:	BAALC
Alternative Name:	BAALC (BAALC Products)
Background:	Brain and acute leukemia, cytoplasmic (BAALC) is localizes to both the membrane and the cytoplasm and exists as multiple alternatively spliced isoforms. Expressed by hematopoietic and neural cells, BAALC interacts with CaMKIIalpha and is thought to play a role in synaptic function at postsynaptic lipid rafts. Overexpression of BAALC concomitant predict adverse clinical outcome and may define important risk factor in cytogenetically normal acute myeloid

Target Details

leukemia (AML). Recombinant human BAALC, fused to His-tag at N-terminus, was expressed in E.coli and purified by using conventional chromatography techniques. Synonyms: , Brain and acute leukemia, cytoplasmic isoform 1 Brain and acute leukemia cytoplasmic, FLJ12015. NCBI no.: NP_079088

Molecular Weight: 17.7 kDa (165aa), confirmed by MALDI-TOF.

Application Details

Restrictions: For Research Use only

Handling

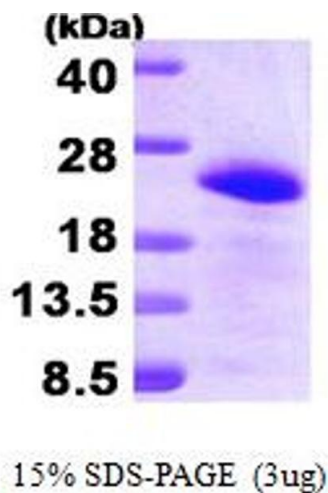
Format: Liquid

Concentration: 0.5 mg/ml (determined by Bradford assay)

Buffer: Liquid. In 20mM Tris-HCl buffer (pH8.0) containing 1mM DTT, 20% glycerol, 2mM EDTA

Storage: 4 °C

Images



SDS-PAGE

Image 1.