



[Go to Product page](#)

Datasheet for ABIN668213
anti-IGFBP5 antibody (AA 101-200)

1 Image

Overview

Quantity:	100 µL
Target:	IGFBP5
Binding Specificity:	AA 101-200
Reactivity:	Human, Mouse
Host:	Rabbit
Clonality:	Polyclonal
Application:	Western Blotting (WB), ELISA, Immunofluorescence (Cultured Cells) (IF (cc)), Immunofluorescence (Paraffin-embedded Sections) (IF (p)), Immunohistochemistry (Paraffin-embedded Sections) (IHC (p)), Immunohistochemistry (Frozen Sections) (IHC (fro))

Product Details

Immunogen:	KLH conjugated synthetic peptide derived from human IGFBP5
Isotype:	IgG
Cross-Reactivity:	Human, Mouse
Predicted Reactivity:	Rat,Dog,Cow,Sheep,Pig
Purification:	Purified by Protein A.

Target Details

Target:	IGFBP5
Alternative Name:	IGFBP5 (IGFBP5 Products)

Target Details

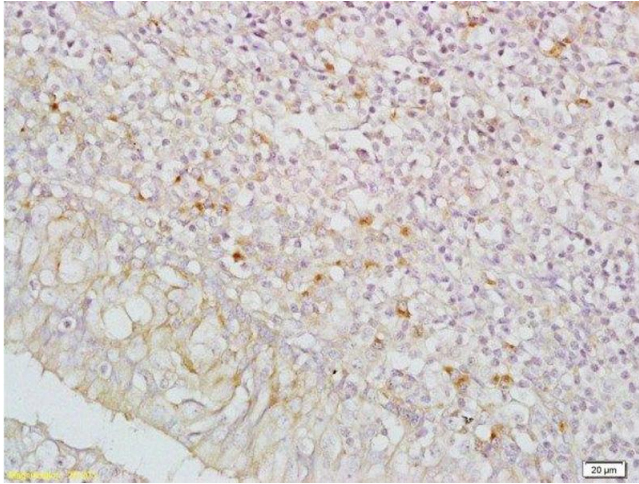
Background:	Synonyms: IBP5, Insulin-like growth factor-binding protein 5, IBP-5, IGF-binding protein 5, IGFBP-5, IGFBP5 Background: IGF-binding proteins prolong the half-life of the IGFs and have been shown to either inhibit or stimulate the growth promoting effects of the IGFs on cell culture. They alter the interaction of IGFs with their cell surface receptors.
Gene ID:	3488
UniProt:	P24593
Pathways:	WNT Signaling , Carbohydrate Homeostasis , Myometrial Relaxation and Contraction , Regulation of Carbohydrate Metabolic Process , Autophagy , Smooth Muscle Cell Migration , Growth Factor Binding

Application Details

Application Notes:	WB 1:300-5000 ELISA 1:500-1000 IHC-P 1:200-400 IHC-F 1:100-500 IF(IHC-P) 1:50-200 IF(IHC-F) 1:50-200 IF(ICC) 1:50-200
Restrictions:	For Research Use only

Handling

Format:	Liquid
Concentration:	1 µg/µL
Buffer:	0.01M TBS(pH 7.4) with 1 % BSA, 0.02 % Proclin300 and 50 % Glycerol.
Preservative:	ProClin
Precaution of Use:	This product contains ProClin: a POISONOUS AND HAZARDOUS SUBSTANCE, which should be handled by trained staff only.
Storage:	4 °C, -20 °C
Storage Comment:	Shipped at 4°C. Store at -20°C for one year. Avoid repeated freeze/thaw cycles.
Expiry Date:	12 months



Immunohistochemistry (Paraffin-embedded Sections)

Image 1. Formalin-fixed and paraffin embedded human nasopharyngeal carcinoma labeled with Anti-IGFBP5/IBP5 Polyclonal Antibody , Unconjugated at 1:200, followed by conjugation to the secondary antibody and DAB staining