

Datasheet for ABIN668646

anti-Muscarinic Acetylcholine Receptor M2 antibody (AA 168-250)[Go to Product page](#)**2** Images**1** Publication

Overview

Quantity:	100 µL
Target:	Muscarinic Acetylcholine Receptor M2 (CHRM2)
Binding Specificity:	AA 168-250
Reactivity:	Human, Rat
Host:	Rabbit
Clonality:	Polyclonal
Conjugate:	This Muscarinic Acetylcholine Receptor M2 antibody is un-conjugated
Application:	Western Blotting (WB), ELISA, Immunohistochemistry (Paraffin-embedded Sections) (IHC (p)), Immunofluorescence (Cultured Cells) (IF (cc)), Immunofluorescence (Paraffin-embedded Sections) (IF (p)), Flow Cytometry (FACS), Immunocytochemistry (ICC), Immunohistochemistry (Frozen Sections) (IHC (fro))

Product Details

Immunogen:	KLH conjugated synthetic peptide derived from human ChRM2
Isotype:	IgG
Cross-Reactivity:	Human, Rat
Predicted Reactivity:	Mouse,Dog,Cow,Pig,Chicken
Purification:	Purified by Protein A.

Target Details

Target:	Muscarinic Acetylcholine Receptor M2 (CHRM2)
---------	--

Target Details

Alternative Name:	ChRM2 (CHRM2 Products)
Background:	<p>Synonyms: HM2, Muscarinic acetylcholine receptor M2, CHRM2</p> <p>Background: The muscarinic acetylcholine receptor mediates various cellular responses, including inhibition of adenylate cyclase, breakdown of phosphoinositides and modulation of potassium channels through the action of G proteins. Primary transducing effect is adenylate cyclase inhibition. Signaling promotes phospholipase C activity, leading to the release of inositol trisphosphate (IP3), this then triggers calcium ion release into the cytosol.</p>
Gene ID:	1129
UniProt:	P08172

Application Details

Application Notes:	<p>WB 1:300-5000</p> <p>ELISA 1:500-1000</p> <p>FCM 1:20-100</p> <p>IHC-P 1:200-400</p> <p>IHC-F 1:100-500</p> <p>IF(IHC-P) 1:50-200</p> <p>IF(IHC-F) 1:50-200</p> <p>IF(ICC) 1:50-200</p> <p>ICC 1:100-500</p>
Restrictions:	For Research Use only

Handling

Format:	Liquid
Concentration:	1 µg/µL
Buffer:	0.01M TBS(pH 7.4) with 1 % BSA, 0.02 % Proclin300 and 50 % Glycerol.
Preservative:	ProClin
Precaution of Use:	This product contains ProClin: a POISONOUS AND HAZARDOUS SUBSTANCE, which should be handled by trained staff only.
Storage:	4 °C,-20 °C
Storage Comment:	Shipped at 4°C. Store at -20°C for one year. Avoid repeated freeze/thaw cycles.

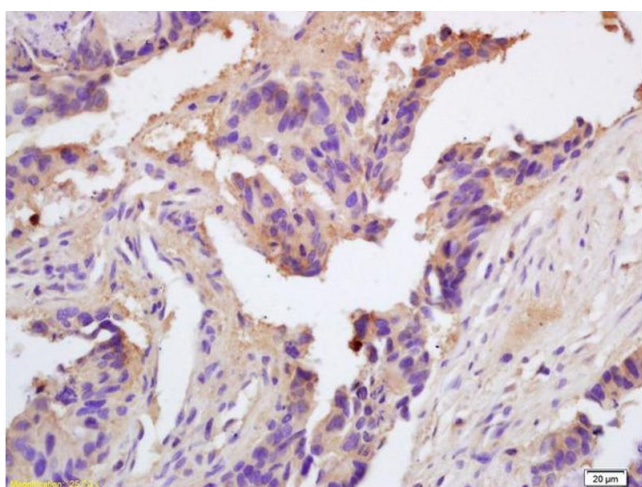
Handling

Expiry Date: 12 months

Publications

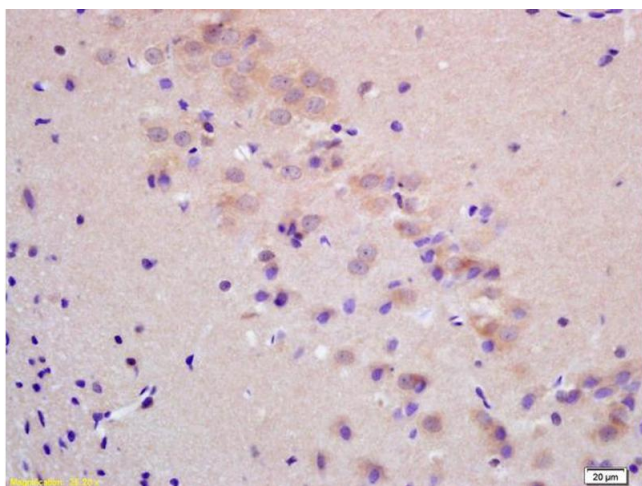
Product cited in: Zhao, Xu, Yun, Zhao, Li, Gong, Yuan, Yan, Zhang, Ding, Wang, Zhang, Dong, Xiu, Yang, Liu, Xue, Li : "Chronic obstructive sleep apnea causes atrial remodeling in canines: mechanisms and implications." in: **Basic research in cardiology**, Vol. 109, Issue 5, pp. 427, (2014) ([PubMed](#)).

Images



Immunohistochemistry

Image 1. Formalin-fixed and paraffin embedded human colon carcinoma labeled with Rabbit Anti ChRM2 Polyclonal Antibody, Unconjugated (ABIN668646) at 1:200 followed by conjugation to the secondary antibody and DAB staining



Immunohistochemistry

Image 2. Formalin-fixed and paraffin embedded rat brain labeled with Rabbit Anti ChRM2 Polyclonal Antibody, Unconjugated (ABIN668646) at 1:200 followed by conjugation to the secondary antibody and DAB staining