



[Go to Product page](#)

Datasheet for ABIN668676  
**anti-ACTH antibody (AA 1-39)**

2 Images

Overview

Quantity:	100 µL
Target:	ACTH
Binding Specificity:	AA 1-39
Reactivity:	Human, Rat
Host:	Rabbit
Clonality:	Polyclonal
Conjugate:	This ACTH antibody is un-conjugated
Application:	ELISA, Immunohistochemistry (Paraffin-embedded Sections) (IHC (p)), Immunofluorescence (Cultured Cells) (IF (cc)), Immunofluorescence (Paraffin-embedded Sections) (IF (p)), Immunohistochemistry (Frozen Sections) (IHC (fro))

Product Details

Immunogen:	KLH conjugated synthetic peptide derived from human ACTH
Isotype:	IgG
Cross-Reactivity:	Human, Rat
Predicted Reactivity:	Mouse,Cow,Goat
Purification:	Purified by Protein A.

Target Details

Target:	ACTH
---------	------

## Target Details

---

Alternative Name:	<a href="#">ACTH (ACTH Products)</a>
Target Type:	Hormone
Background:	<p>Synonyms: LPH, MSH, NPP, POC, ACTH, CLIP, Pro-opiomelanocortin, POMC, Corticotropin-lipotropin</p> <p>Background: ACTH stimulates the adrenal glands to release cortisol. MSH (melanocyte-stimulating hormone) increases the pigmentation of skin by increasing melanin production in melanocytes. Beta-endorphin and Met-enkephalin are endogenous opiates.</p>
Gene ID:	5443
UniProt:	<a href="#">P01189</a>
Pathways:	<a href="#">Metabolism of Steroid Hormones and Vitamin D</a> , <a href="#">Peptide Hormone Metabolism</a> , <a href="#">Hormone Activity</a>

## Application Details

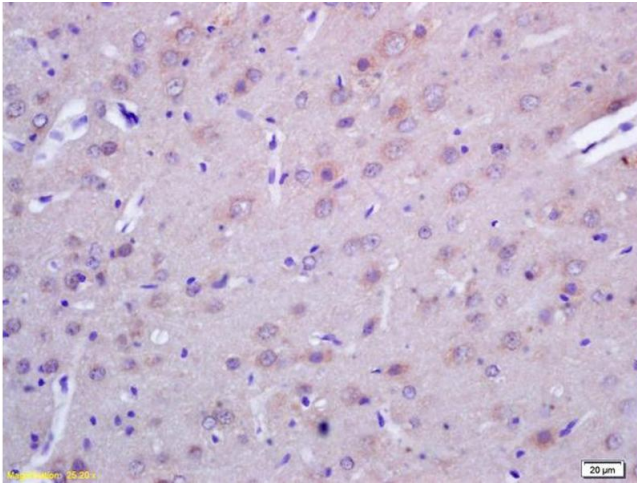
---

Application Notes:	<p>ELISA 1:500-1000</p> <p>IHC-P 1:200-400</p> <p>IHC-F 1:100-500</p> <p>IF(IHC-P) 1:50-200</p> <p>IF(IHC-F) 1:50-200</p> <p>IF(ICC) 1:50-200</p>
Restrictions:	For Research Use only

## Handling

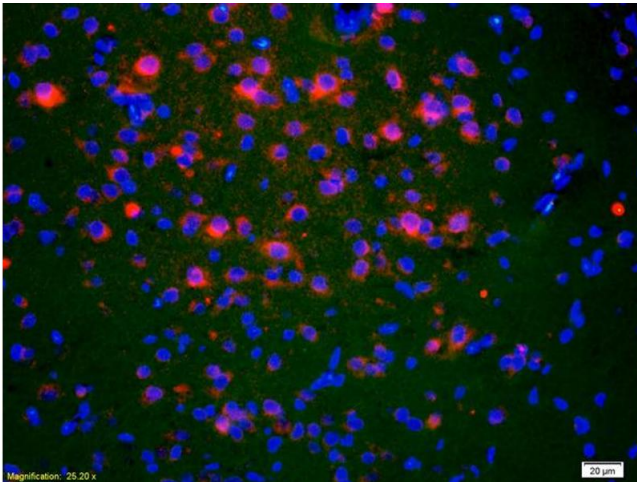
---

Format:	Liquid
Concentration:	1 µg/µL
Buffer:	0.01M TBS( pH 7.4) with 1 % BSA, 0.02 % Proclin300 and 50 % Glycerol.
Preservative:	ProClin
Precaution of Use:	This product contains ProClin: a POISONOUS AND HAZARDOUS SUBSTANCE, which should be handled by trained staff only.
Storage:	4 °C,-20 °C
Storage Comment:	Shipped at 4°C. Store at -20°C for one year. Avoid repeated freeze/thaw cycles.



#### Immunohistochemistry

**Image 1.** Formalin-fixed and paraffin embedded rat brain labeled with Rabbit Anti ACTH (1-39) Polyclonal Antibody, Unconjugated (ABIN668676) at 1:200 followed by conjugation to the secondary antibody and DAB staining



#### Immunofluorescence

**Image 2.** Formalin-fixed and paraffin-embedded rat brain labeled with Anti-ACTH (1-39) Polyclonal Antibody, Unconjugated (ABIN668676) 1:200, overnight at 4°C, The secondary antibody was Goat Anti-Rabbit IgG, Cy3 conjugated used at 1:200 dilution for 40 minutes at 37°C.