

Datasheet for ABIN668706
anti-IL1RAPL1 antibody (AA 301-400)[Go to Product page](#)

1 Image

Overview

Quantity:	100 µL
Target:	IL1RAPL1
Binding Specificity:	AA 301-400
Reactivity:	Mouse, Rat
Host:	Rabbit
Clonality:	Polyclonal
Conjugate:	This IL1RAPL1 antibody is un-conjugated
Application:	Western Blotting (WB), ELISA, Flow Cytometry (FACS), Immunofluorescence (Cultured Cells) (IF (cc)), Immunofluorescence (Paraffin-embedded Sections) (IF (p)), Immunohistochemistry (Frozen Sections) (IHC (fro)), Immunohistochemistry (Paraffin-embedded Sections) (IHC (p))

Product Details

Immunogen:	KLH conjugated synthetic peptide derived from human IL1RAPL1
Isotype:	IgG
Cross-Reactivity:	Mouse, Rat
Predicted Reactivity:	Human,Dog,Cow,Pig,Horse,Chicken,Rabbit,Guinea Pig
Purification:	Purified by Protein A.

Target Details

Target:	IL1RAPL1
---------	----------

Target Details

Alternative Name:	IL1RAPL1 (IL1RAPL1 Products)
Background:	<p>Synonyms: IL 1 RAPL 1, IL 1RAPL 1, IL-1-RAPL-1, IL-1RAPL-1, IL1R8, IL1RAPL 1, IL1RAPL, IL1RAPL-1, IL1RAPL1, Interleukin 1 receptor 8, Interleukin 1 receptor accessory protein like 1, Interleukin-1 receptor accessory protein-like 1, IRPL1_HUMAN, Mental retardation X linked 10, Mental retardation X linked 21, Mental retardation X linked 34, MRX 21, MRX 34, MRX10, MRX21, MRX34, Oligophrenin 4, Oligophrenin-4, Oligophrenin4, OPHN 4, OPHN4, Three immunoglobulin domain containing IL 1 receptor related 2, Three immunoglobulin domain-containing IL-1 receptor-related 2, TIGIRR 2, TIGIRR-2, TIGIRR2 antibodyX linked interleukin 1 receptor accessory protein like 1, X-linked interleukin-1 receptor accessory protein-like 1.</p> <p>Background: The protein encoded by this gene is a member of the interleukin 1 receptor family and is similar to the interleukin 1 accessory proteins. It is most closely related to interleukin 1 receptor accessory protein-like 2 (IL1RAPL2). This gene and IL1RAPL2 are located at a region on chromosome X that is associated with X-linked non-syndromic mental retardation. Deletions and mutations in this gene were found in patients with mental retardation. This gene is expressed at a high level in post-natal brain structures involved in the hippocampal memory system, which suggests a specialized role in the physiological processes underlying memory and learning abilities.</p>
Gene ID:	11141
Pathways:	Synaptic Membrane , Growth Factor Binding

Application Details

Application Notes:	WB 1:300-5000 ELISA 1:500-1000 FCM 1:20-100 IHC-P 1:200-400 IHC-F 1:100-500 IF(IHC-P) 1:50-200 IF(IHC-F) 1:50-200 IF(ICC) 1:50-200
Restrictions:	For Research Use only

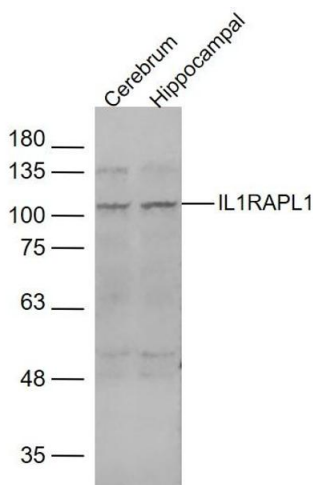
Handling

Format:	Liquid
---------	--------

Handling

Concentration:	1 µg/µL
Buffer:	0.01M TBS(pH 7.4) with 1 % BSA, 0.02 % Proclin300 and 50 % Glycerol.
Preservative:	ProClin
Precaution of Use:	This product contains ProClin: a POISONOUS AND HAZARDOUS SUBSTANCE, which should be handled by trained staff only.
Storage:	4 °C,-20 °C
Storage Comment:	Shipped at 4°C. Store at -20°C for one year. Avoid repeated freeze/thaw cycles.
Expiry Date:	12 months

Images



Western Blotting

Image 1. Lane 1: mouse cerebrum Lane 2: mouse hippocampal lysates probed with IL1RAPL1 Polyclonal Antibody, Unconjugated at 1:1000 dilution and 4°C overnight incubation. Followed by conjugated secondary antibody incubation at 1:10000 for 60 min at 37°C.