



Datasheet for ABIN668796
anti-NAIF1 antibody (AA 3-85)



[Go to Product page](#)

2 Images

Overview

Quantity:	100 µL
Target:	NAIF1
Binding Specificity:	AA 3-85
Reactivity:	Human
Host:	Rabbit
Clonality:	Polyclonal
Conjugate:	This NAIF1 antibody is un-conjugated
Application:	ELISA, Flow Cytometry (FACS), Immunofluorescence (Cultured Cells) (IF (cc)), Immunofluorescence (Paraffin-embedded Sections) (IF (p)), Immunohistochemistry (Frozen Sections) (IHC (fro)), Immunohistochemistry (Paraffin-embedded Sections) (IHC (p))

Product Details

Immunogen:	KLH conjugated synthetic peptide derived from human NAIF1
Isotype:	IgG
Cross-Reactivity:	Human
Predicted Reactivity:	Mouse,Rat,Dog,Cow,Horse,Chicken
Purification:	Purified by Protein A.

Target Details

Target:	NAIF1
---------	-------

Target Details

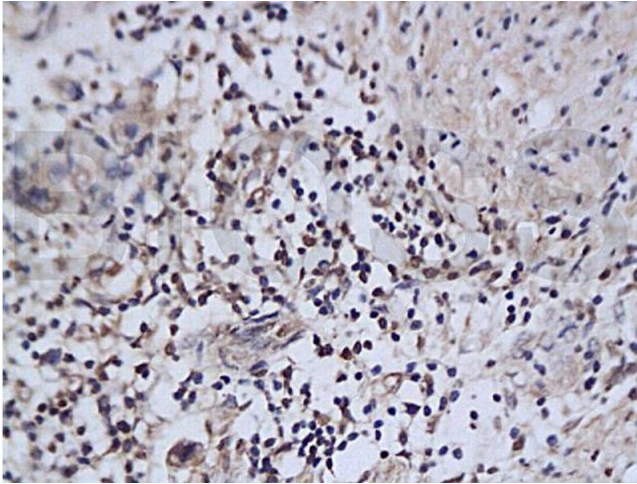
Alternative Name:	NAIF1 (NAIF1 Products)
Background:	Synonyms: C9orf90, bA379C10.2, Nuclear apoptosis-inducing factor 1, NAIF1 Background: Induces apoptosis.
Gene ID:	203245
UniProt:	Q69Y17

Application Details

Application Notes:	ELISA 1:500-1000 FCM 1:20-100 IHC-P 1:200-400 IHC-F 1:100-500 IF(IHC-P) 1:50-200 IF(IHC-F) 1:50-200 IF(ICC) 1:50-200
Restrictions:	For Research Use only

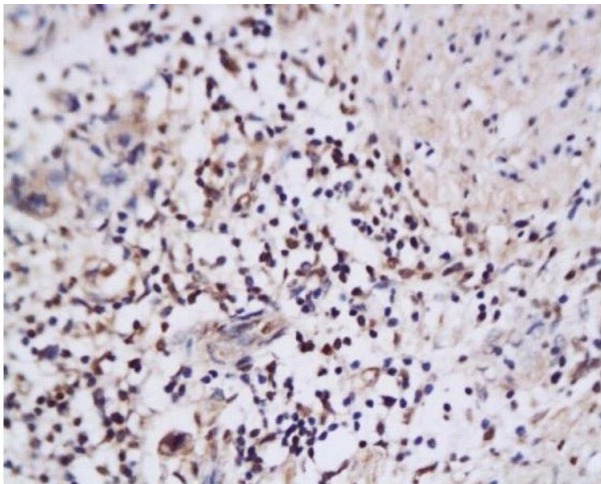
Handling

Format:	Liquid
Concentration:	1 µg/µL
Buffer:	0.01M TBS(pH 7.4) with 1 % BSA, 0.02 % Proclin300 and 50 % Glycerol.
Preservative:	ProClin
Precaution of Use:	This product contains ProClin: a POISONOUS AND HAZARDOUS SUBSTANCE, which should be handled by trained staff only.
Storage:	4 °C,-20 °C
Storage Comment:	Shipped at 4°C. Store at -20°C for one year. Avoid repeated freeze/thaw cycles.
Expiry Date:	12 months



Immunohistochemistry

Image 1.



Immunohistochemistry (Paraffin-embedded Sections)

Image 2.