

Datasheet for ABIN669066  
**anti-GLUT1 antibody (AA 191-270)**[Go to Product page](#)

1 Image

1 Publication

## Overview

Quantity:	100 µL
Target:	GLUT1 (SLC2A1)
Binding Specificity:	AA 191-270
Reactivity:	Human, Mouse, Rat
Host:	Rabbit
Clonality:	Polyclonal
Conjugate:	This GLUT1 antibody is un-conjugated
Application:	Western Blotting (WB), ELISA, Immunocytochemistry (ICC), Immunohistochemistry (Paraffin-embedded Sections) (IHC (p)), Flow Cytometry (FACS), Immunohistochemistry (Frozen Sections) (IHC (fro)), Immunofluorescence (Paraffin-embedded Sections) (IF (p)), Immunofluorescence (Cultured Cells) (IF (cc))

## Product Details

Immunogen:	KLH conjugated synthetic peptide derived from human GLUT1
Isotype:	IgG
Cross-Reactivity:	Human, Mouse, Rat
Predicted Reactivity:	Dog,Cow,Sheep,Pig,Chicken
Purification:	Purified by Protein A.

## Target Details

Target:	GLUT1 (SLC2A1)
---------	----------------

## Target Details

Alternative Name:	GLUT1 ( <a href="#">SLC2A1 Products</a> )
Background:	<p>Synonyms: Solute carrier family 2, facilitated glucose transporter member 1, Glucose transporter type 1, erythrocyte/brain, GLUT-1, HepG2 glucose transporter, SLC2A1, GLUT1</p> <p>Background: Facilitative glucose transporter. This isoform may be responsible for constitutive or basal glucose uptake. Has a very broad substrate specificity, can transport a wide range of aldoses including both pentoses and hexoses.</p>
Molecular Weight:	54kDa
Gene ID:	6513
Pathways:	<a href="#">Sensory Perception of Sound</a> , <a href="#">Dicarboxylic Acid Transport</a> , <a href="#">Warburg Effect</a>

## Application Details

Application Notes:	<p>WB 1:300-5000</p> <p>ELISA 1:500-1000</p> <p>FCM 1:20-100</p> <p>IHC-P 1:200-400</p> <p>IHC-F 1:100-500</p> <p>IF(IHC-P) 1:50-200</p> <p>IF(IHC-F) 1:50-200</p> <p>IF(ICC) 1:50-200</p> <p>ICC 1:100-500</p>
Restrictions:	For Research Use only

## Handling

Format:	Liquid
Concentration:	1 µg/µL
Buffer:	0.01M TBS( pH 7.4) with 1 % BSA, 0.02 % Proclin300 and 50 % Glycerol.
Preservative:	ProClin
Precaution of Use:	This product contains ProClin: a POISONOUS AND HAZARDOUS SUBSTANCE, which should be handled by trained staff only.
Storage:	4 °C,-20 °C
Storage Comment:	Shipped at 4°C. Store at -20°C for one year. Avoid repeated freeze/thaw cycles.

## Handling

---

Expiry Date: 12 months

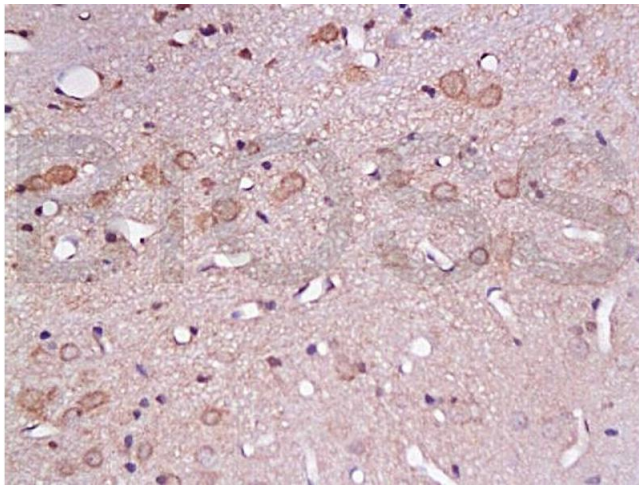
## Publications

---

Product cited in: Yan, Zhang, Wang, Xu, Ren, Zhang, Shi, Chen, Shi, Tian, Zhao, Dong: "Significant reduction of the GLUT3 level, but not GLUT1 level, was observed in the brain tissues of several scrapie experimental animals and scrapie-infected cell lines." in: **Molecular neurobiology**, Vol. 49, Issue 2, pp. 991-1004, (2014) ([PubMed](#)).

## Images

---



### Immunohistochemistry

**Image 1.** Formalin-fixed and paraffin embedded rat brain tissue labeled with Anti-GLUT1 Polyclonal Antibody (ABIN669066), Unconjugated at 1:200, followed by conjugation to the secondary antibody and DAB staining