

Datasheet for ABIN669201

anti-EPH Receptor A2 antibody (AA 901-976)

4 Images

1 Publication

[Go to Product page](#)

Overview

Quantity:	100 µL
Target:	EPH Receptor A2 (EPHA2)
Binding Specificity:	AA 901-976
Reactivity:	Human, Mouse, Rat
Host:	Rabbit
Clonality:	Polyclonal
Conjugate:	This EPH Receptor A2 antibody is un-conjugated
Application:	Western Blotting (WB), ELISA, Immunofluorescence (Paraffin-embedded Sections) (IF (p)), Immunohistochemistry (Paraffin-embedded Sections) (IHC (p)), Immunohistochemistry (Frozen Sections) (IHC (fro))

Product Details

Immunogen:	KLH conjugated synthetic peptide derived from human EphA2
Isotype:	IgG
Cross-Reactivity:	Human, Mouse, Rat
Predicted Reactivity:	Dog,Cow,Monkey
Purification:	Purified by Protein A.

Target Details

Target:	EPH Receptor A2 (EPHA2)
---------	-------------------------

Target Details

Alternative Name:	EphA2 (EPHA2 Products)
Background:	<p>Synonyms: ECK, CTPA, ARCC2, CTPP1, CTRCT6, Ephrin type-A receptor 2, Epithelial cell kinase, Tyrosine-protein kinase receptor ECK, EPHA2</p> <p>Background: Receptor tyrosine kinase which binds promiscuously membrane-bound ephrin-A family ligands residing on adjacent cells, leading to contact-dependent bidirectional signaling into neighboring cells. The signaling pathway downstream of the receptor is referred to as forward signaling while the signaling pathway downstream of the ephrin ligand is referred to as reverse signaling. Activated by the ligand ephrin-A1/EFNA1 regulates migration, integrin-mediated adhesion, proliferation and differentiation of cells. Regulates cell adhesion and differentiation through DSG1/desmoglein-1 and inhibition of the ERK1/ERK2 (MAPK3/MAPK1, respectively) signaling pathway. May also participate in UV radiation-induced apoptosis and have a ligand-independent stimulatory effect on chemotactic cell migration. During development, may function in distinctive aspects of pattern formation and subsequently in development of several fetal tissues. Involved for instance in angiogenesis, in early hindbrain development and epithelial proliferation and branching morphogenesis during mammary gland development. Engaged by the ligand ephrin-A5/EFNA5 may regulate lens fiber cells shape and interactions and be important for lens transparency development and maintenance. With ephrin-A2/EFNA2 may play a role in bone remodeling through regulation of osteoclastogenesis and osteoblastogenesis.</p>
Gene ID:	1969
UniProt:	P29317
Pathways:	RTK Signaling

Application Details

Application Notes:	WB 1:300-5000 ELISA 1:500-1000 IHC-P 1:200-400 IHC-F 1:100-500 IF(IHC-P) 1:50-200
Restrictions:	For Research Use only

Handling

Format:	Liquid
---------	--------

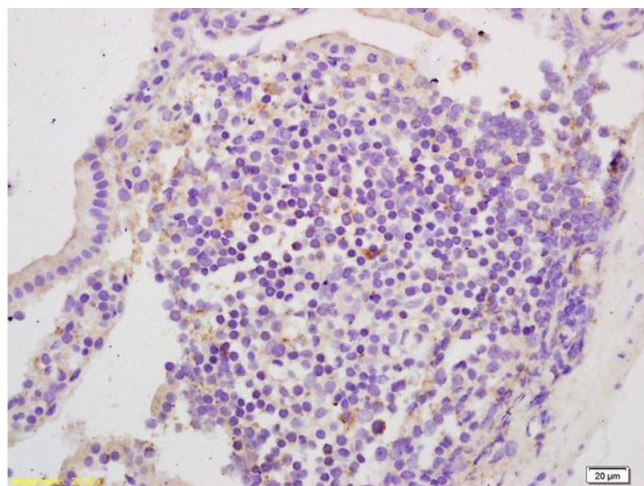
Handling

Concentration:	1 µg/µL
Buffer:	0.01M TBS(pH 7.4) with 1 % BSA, 0.02 % Proclin300 and 50 % Glycerol.
Preservative:	ProClin
Precaution of Use:	This product contains ProClin: a POISONOUS AND HAZARDOUS SUBSTANCE, which should be handled by trained staff only.
Storage:	4 °C,-20 °C
Storage Comment:	Shipped at 4°C. Store at -20°C for one year. Avoid repeated freeze/thaw cycles.
Expiry Date:	12 months

Publications

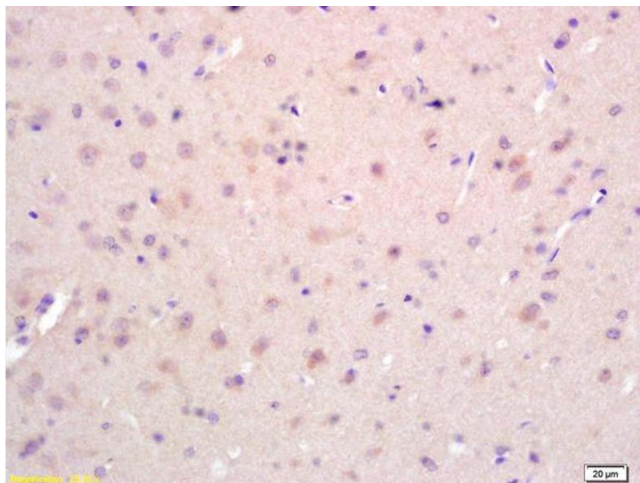
Product cited in: Wu, Fu, Zhou, Gong, Liu, Qiao, Li: "HIF-1? and HIF-2?: siblings in promoting angiogenesis of residual hepatocellular carcinoma after high-intensity focused ultrasound ablation." in: **PLoS ONE**, Vol. 9, Issue 2, pp. e88913, (2014) ([PubMed](#)).

Images



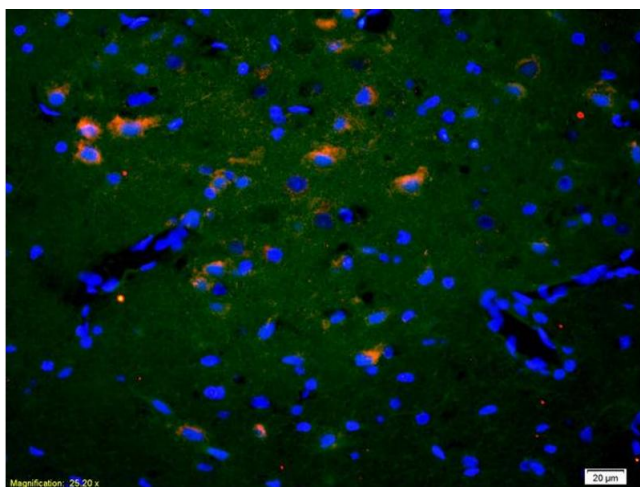
Immunohistochemistry

Image 1. Formalin-fixed and paraffin embedded mouse intestine labeled with Rabbit Anti EphA2/Eph receptor A2 Polyclonal Antibody, Unconjugated (ABIN669201) at 1:200 followed by conjugation to the secondary antibody and DAB staining



Immunohistochemistry

Image 2. Formalin-fixed and paraffin embedded rat brain labeled with Rabbit Anti EphA2/Eph receptor A2 Polyclonal Antibody, Unconjugated (ABIN669201) at 1:200 followed by conjugation to the secondary antibody and DAB staining



Immunofluorescence

Image 3. Formalin-fixed and paraffin-embedded rat brain labeled with Anti-EphA2/Eph receptor A2 Polyclonal Antibody, Unconjugated (ABIN669201) 1:200, overnight at 4°C, The secondary antibody was Goat Anti-Rabbit IgG, Cy3 conjugated used at 1:200 dilution for 40 minutes at 37°C.

Please check the [product details page](#) for more images. Overall 4 images are available for ABIN669201.