

Datasheet for ABIN669426  
**anti-SLC9A1 antibody (AA 470-550)**

## 2 Images

[Go to Product page](#)

## Overview

Quantity:	100 µL
Target:	SLC9A1
Binding Specificity:	AA 470-550
Reactivity:	Rat, Mouse
Host:	Rabbit
Clonality:	Polyclonal
Conjugate:	This SLC9A1 antibody is un-conjugated
Application:	Western Blotting (WB), ELISA, Immunohistochemistry (Paraffin-embedded Sections) (IHC (p)), Immunofluorescence (Cultured Cells) (IF (cc)), Immunofluorescence (Paraffin-embedded Sections) (IF (p)), Immunohistochemistry (Frozen Sections) (IHC (fro))

## Product Details

Immunogen:	KLH conjugated synthetic peptide derived from human NHE1
Isotype:	IgG
Cross-Reactivity:	Mouse, Rat
Predicted Reactivity:	Human,Dog,Cow,Pig,Horse,Chicken,Rabbit
Purification:	Purified by Protein A.

## Target Details

Target:	SLC9A1
---------	--------

## Target Details

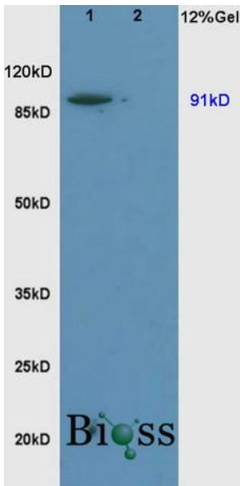
Alternative Name:	Sodium / Hydrogen Exchanger 1 ( <a href="#">SLC9A1 Products</a> )
Background:	<p>Synonyms: APNH, NHE1, LIKNS, NHE-1, PPP1R143, Sodium/hydrogen exchanger 1, Na(+)/H(+) antiporter, amiloride-sensitive, Na(+)/H(+) exchanger 1, Solute carrier family 9 member 1, SLC9A1, APNH1</p> <p>Background: Involved in pH regulation to eliminate acids generated by active metabolism or to counter adverse environmental conditions. Major proton extruding system driven by the inward sodium ion chemical gradient. Plays an important role in signal transduction.</p>
Gene ID:	6548
UniProt:	<a href="#">P19634</a>
Pathways:	<a href="#">Glycosaminoglycan Metabolic Process</a> , <a href="#">Proton Transport</a>

## Application Details

Application Notes:	WB 1:300-5000 ELISA 1:500-1000 IHC-P 1:200-400 IHC-F 1:100-500 IF(IHC-P) 1:50-200 IF(IHC-F) 1:50-200 IF(ICC) 1:50-200
Restrictions:	For Research Use only

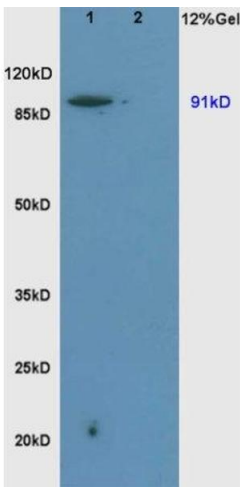
## Handling

Format:	Liquid
Concentration:	1 µg/µL
Buffer:	0.01M TBS( pH 7.4) with 1 % BSA, 0.02 % Proclin300 and 50 % Glycerol.
Preservative:	ProClin
Precaution of Use:	This product contains ProClin: a POISONOUS AND HAZARDOUS SUBSTANCE, which should be handled by trained staff only.
Storage:	4 °C,-20 °C
Storage Comment:	Shipped at 4°C. Store at -20°C for one year. Avoid repeated freeze/thaw cycles.
Expiry Date:	12 months



SDS-PAGE

**Image 1.** L1 rat brain, L2 rat liver lysates probed (ABIN669426) at 1:200 in 4 °C. Followed by conjugation to secondary antibody at 1:3000 90min in 37 °C. Predicted band and observed band size: 91kDa.



Western Blotting

**Image 2.** L1 rat brain, L2 rat liver lysates probed at 1:200 in 4°C. Followed by conjugation to secondary antibody -HRP) at 1:3000 90min in 37°C. Predicted band and observed band size: 91kDa.