

Datasheet for ABIN669486
anti-CD2AP antibody (AA 561-641)[Go to Product page](#)

2 Images

Overview

Quantity:	100 µL
Target:	CD2AP (Cd2ap)
Binding Specificity:	AA 561-641
Reactivity:	Rat, Mouse
Host:	Rabbit
Clonality:	Polyclonal
Conjugate:	This CD2AP antibody is un-conjugated
Application:	Western Blotting (WB), ELISA, Immunocytochemistry (ICC), Immunohistochemistry (Paraffin-embedded Sections) (IHC (p)), Immunohistochemistry (Frozen Sections) (IHC (fro)), Immunofluorescence (Cultured Cells) (IF (cc)), Immunofluorescence (Paraffin-embedded Sections) (IF (p))

Product Details

Immunogen:	KLH conjugated synthetic peptide derived from human CD2AP
Isotype:	IgG
Cross-Reactivity:	Mouse, Rat
Predicted Reactivity:	Human,Dog,Cow,Sheep,Pig,Horse,Chicken,Rabbit,Guinea Pig
Purification:	Purified by Protein A.

Target Details

Target:	CD2AP (Cd2ap)
---------	---------------

Target Details

Alternative Name:	CD2AP (Cd2ap Products)
Background:	<p>Synonyms: CMS, CD2-associated protein, Adapter protein CMS, Cas ligand with multiple SH3 domains, CD2AP</p> <p>Background: Seems to act as an adapter protein between membrane proteins and the actin cytoskeleton. In collaboration with CBLC, modulates the rate of RET turnover and may act as regulatory checkpoint that limits the potency of GDNF on neuronal survival. Controls CBLC function, converting it from an inhibitor to a promoter of RET degradation. May play a role in receptor clustering and cytoskeletal polarity in the junction between T-cell and antigen-presenting cell. May anchor the podocyte slit diaphragm to the actin cytoskeleton in renal glomerulus. Also required for cytokinesis.</p>
Gene ID:	23607
UniProt:	Q9Y5K6

Application Details

Application Notes:	WB 1:300-5000 ELISA 1:500-1000 IHC-P 1:200-400 IHC-F 1:100-500 IF(IHC-P) 1:50-200 IF(IHC-F) 1:50-200 IF(ICC) 1:50-200 ICC 1:100-500
Restrictions:	For Research Use only

Handling

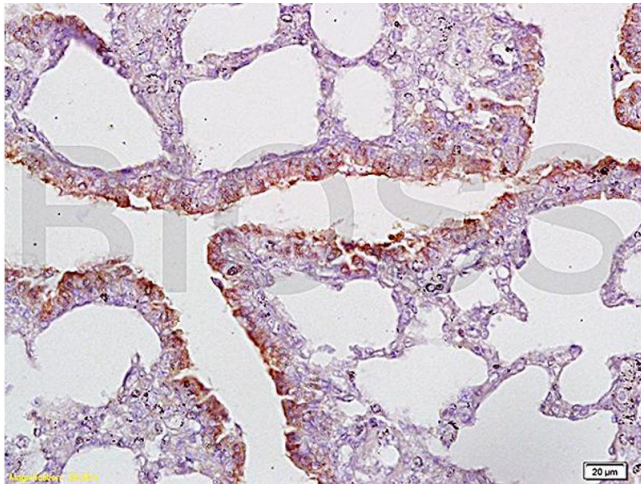
Format:	Liquid
Concentration:	1 µg/µL
Buffer:	0.01M TBS(pH 7.4) with 1 % BSA, 0.02 % Proclin300 and 50 % Glycerol.
Preservative:	ProClin
Precaution of Use:	This product contains ProClin: a POISONOUS AND HAZARDOUS SUBSTANCE, which should be handled by trained staff only.
Storage:	4 °C,-20 °C

Handling

Storage Comment: Shipped at 4°C. Store at -20°C for one year. Avoid repeated freeze/thaw cycles.

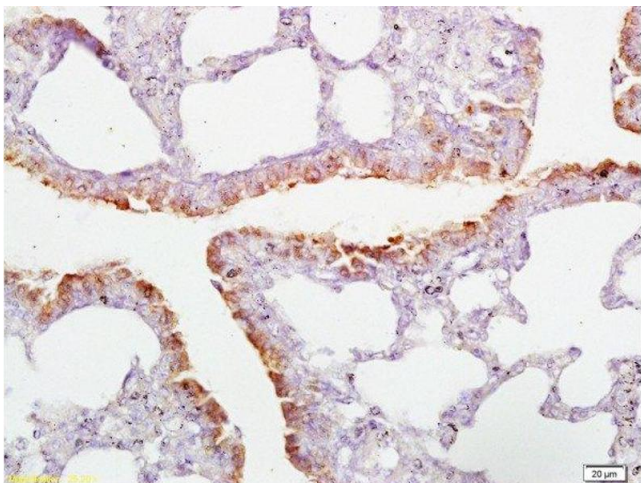
Expiry Date: 12 months

Images



Immunohistochemistry

Image 1. Formalin-fixed and paraffin embedded rat lung tissue labeled with Anti-CD2AP Polyclonal Antibody (ABIN669486), Unconjugated at 1:200, followed by conjugation to the secondary antibody and DAB staining



Immunohistochemistry (Paraffin-embedded Sections)

Image 2. Formalin-fixed and paraffin embedded rat lung tissue labeled with Anti-CD2AP Polyclonal Antibody , Unconjugated at 1:200, followed by conjugation to the secondary antibody and DAB staining