

Datasheet for ABIN669666

**anti-MME antibody (AA 501-600)**

5 Images

1 Publication

[Go to Product page](#)

## Overview

Quantity:	100 µL
Target:	MME
Binding Specificity:	AA 501-600
Reactivity:	Human, Mouse, Rat
Host:	Rabbit
Clonality:	Polyclonal
Conjugate:	This MME antibody is un-conjugated
Application:	Flow Cytometry (FACS), Western Blotting (WB), ELISA, Immunohistochemistry (Paraffin-embedded Sections) (IHC (p)), Immunocytochemistry (ICC), Immunohistochemistry (Frozen Sections) (IHC (fro)), Immunofluorescence (Paraffin-embedded Sections) (IF (p)), Immunofluorescence (Cultured Cells) (IF (cc))

## Product Details

Immunogen:	KLH conjugated synthetic peptide derived from human CD10
Isotype:	IgG
Cross-Reactivity:	Human, Mouse, Rat
Purification:	Purified by Protein A.

## Target Details

Target:	MME
Alternative Name:	CD10 ( <a href="#">MME Products</a> )

## Target Details

Target Type:	Chemical
Background:	<p>Synonyms: NEP, SFE, CD1, CALLA, Neprilysin, Atriopeptidase, Common acute lymphocytic leukemia antigen, Enkephalinase, Neutral endopeptidase 24.11, Neutral endopeptidase, Skin fibroblast elastase, MME, EPN</p> <p>Background: Thermolysin-like specificity, but is almost confined on acting on polypeptides of up to 3 amino acids. Biologically important in the destruction of opioid peptides such as Met- and Leu-enkephalins by cleavage of a Gly-Phe bond. Able to cleave angiotensin-1, angiotensin-2 and angiotensin 1-9. Involved in the degradation of atrial natriuretic factor (ANF). Displays UV-inducible elastase activity toward skin preelastic and elastic fibers.</p>
Gene ID:	4311
UniProt:	<a href="#">P08473</a>
Pathways:	<a href="#">RTK Signaling</a> , <a href="#">Peptide Hormone Metabolism</a> , <a href="#">Regulation of Systemic Arterial Blood Pressure by Hormones</a> , <a href="#">Smooth Muscle Cell Migration</a>

## Application Details

Application Notes:	WB 1:300-5000 ELISA 1:500-1000 FCM 1:20-100 IHC-P 1:200-400 IHC-F 1:100-500 IF(IHC-P) 1:50-200 IF(IHC-F) 1:50-200 IF(ICC) 1:50-200 ICC 1:100-500
Restrictions:	For Research Use only

## Handling

Format:	Liquid
Concentration:	1 µg/µL
Buffer:	0.01M TBS( pH 7.4) with 1 % BSA, 0.02 % Proclin300 and 50 % Glycerol.
Preservative:	ProClin
Precaution of Use:	This product contains ProClin: a POISONOUS AND HAZARDOUS SUBSTANCE, which should be

## Handling

handled by trained staff only.

Storage: 4 °C,-20 °C

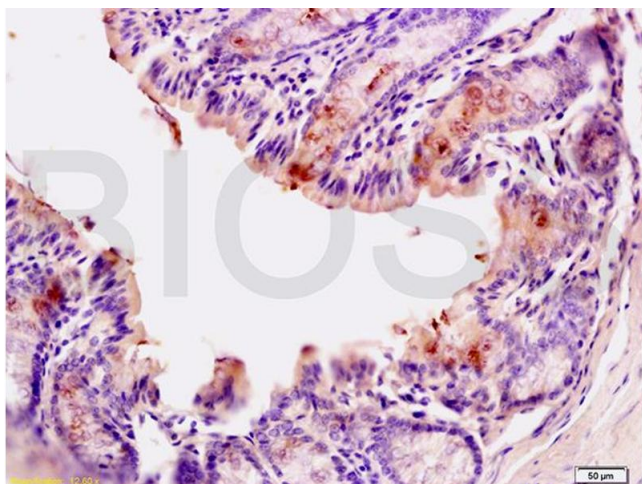
Storage Comment: Shipped at 4°C. Store at -20°C for one year. Avoid repeated freeze/thaw cycles.

Expiry Date: 12 months

## Publications

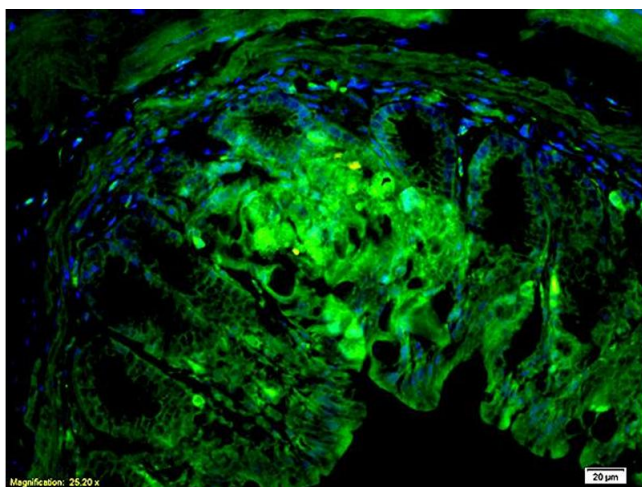
Product cited in: Chopra, Kraus, Schwinn, Ritz, Mattenheimer, Mottok, Rosenwald, Einsele, Beilhack: "Non-invasive bioluminescence imaging to monitor the immunological control of a plasmablastic lymphoma-like B cell neoplasia after hematopoietic cell transplantation." in: **PLoS ONE**, Vol. 8, Issue 12, pp. e81320, (2013) ([PubMed](#)).

## Images



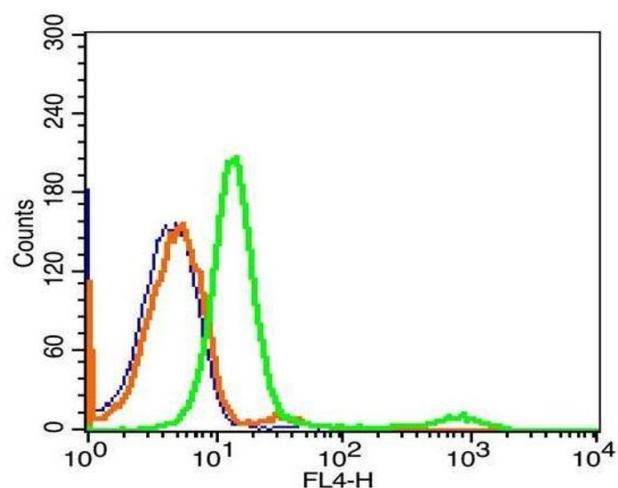
### Immunohistochemistry

**Image 1.** Formalin-fixed and paraffin embedded mouse small intestine tissue labeled with Anti-CD10 Polyclonal Antibody (ABIN669666), Unconjugated at 1:200, followed by conjugation to the secondary antibody and DAB staining



### Immunofluorescence

**Image 2.** Formalin-fixed and paraffin embedded mouse small intestine tissue labeled with Anti-CD10 Polyclonal Antibody (ABIN669666), Unconjugated at 1:200, followed by conjugation to the secondary antibody Goat Anti-Rabbit IgG, FITC conjugated used at 1:200 dilution for 40 minutes at 37°C. DAPI (5 µg/ml,blue) was used to stain the cell nuclei



### Flow Cytometry

**Image 3.** Human Hela cells probed with CD10 Polyclonal Antibody, Alexa Fluor 647 conjugated -A647) (green) at 1:20 for 30 minutes compared to unstained cells (blue) and isotype control (orange).

Please check the [product details page](#) for more images. Overall 5 images are available for ABIN669666.