

Datasheet for ABIN669696

## anti-IL-18 antibody



[Go to Product page](#)

### 1 Image

#### Overview

|              |   |
|--------------|---|
| Quantity:    | 100 µL  |
| Target:      | IL-18 (IL18)  |
| Reactivity:  | Mouse, Rat  |
| Host:        | Rabbit  |
| Clonality:   | Polyclonal  |
| Conjugate:   | This IL-18 antibody is un-conjugated  |
| Application: | Immunofluorescence (Paraffin-embedded Sections) (IF (p)), Immunohistochemistry (Paraffin-embedded Sections) (IHC (p)) |

#### Product Details

|                   |   |
|-------------------|---|
| Immunogen:        | KLH conjugated synthetic peptide derived from rat IL-18 |
| Isotype:          | IgG   |
| Cross-Reactivity: | Mouse, Rat  |
| Purification:     | Purified by Protein A.                                  |

#### Target Details

|                   |   |
|-------------------|---|
| Target:           | IL-18 (IL18)  |
| Alternative Name: | IL-18 ( <a href="#">IL18 Products</a> )   |
| Background:       | Synonyms: interferon gamma-inducing factor IG, Interferon gamma-inducing factor, N-gamma-inducing factor, Interleukin-1 gamma, Iboctadekin, N gamma inducing factor, IG, IL 1 gamma, IL 18, IL 1g, IL1 gamma, IL18 protein, IL1F4, IL1g, IL1gamma, IL4, Interferon gamma inducing |

## Target Details

factor, Interleukin 1 gamma, Interleukin 18, Interleukin18, MGC12320, IL18\_MOUSE.

Background: IL18 (IFN-gamma-inducing factor, IGIF) is a novel pro-inflammatory cytokine that augments natural killer (NK) activity in spleen cells. This cytokine can induce the IFN-gamma production of T cells. The combination of this cytokine and IL12 has been shown to inhibit IL4 dependent IgE and IgG1 production, and enhance IgG2a production of B cells. IL18 binding protein (IL18BP) can specifically interact with this cytokine, and thus negatively regulate its biological activity. IL18 also has other biological properties such as stimulation of Fas ligand expression, and induction of CC and CXC chemokines. IL18 increases production of competent HIV. IL18 is related to the IL1 family. One of the IL18 receptor chains is the IL1 receptor-related protein, a member of the IL 1R family. Like IL1, IL18 is first synthesized as a leaderless precursor requiring the IL1 converting enzyme (ICE) for cleavage into an active molecule. IL18 may play a role in tissue injury in inflammatory reactions.

Gene ID: 29197

Pathways: [Cellular Response to Molecule of Bacterial Origin](#), [Activated T Cell Proliferation](#), [Cancer Immune Checkpoints](#), [Inflammasome](#)

## Application Details

Application Notes: IHC-P 1:200-400  
IF(IHC-P) 1:50-200

Restrictions: For Research Use only

## Handling

Format: Liquid

Concentration: 1 µg/µL

Buffer: 0.01M TBS( pH 7.4) with 1 % BSA, 0.02 % Proclin300 and 50 % Glycerol.

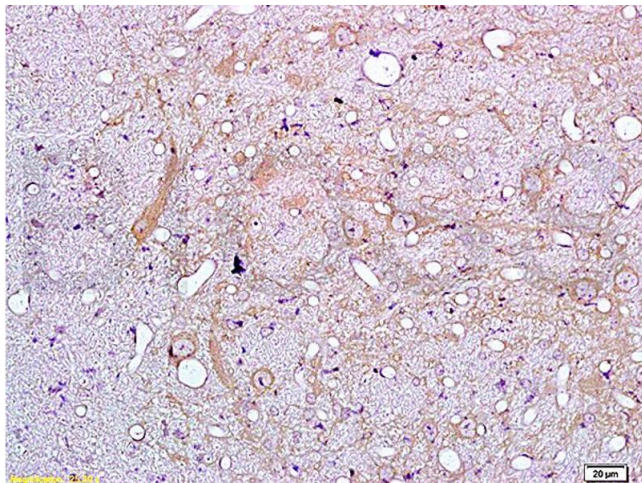
Preservative: ProClin

Precaution of Use: This product contains ProClin: a POISONOUS AND HAZARDOUS SUBSTANCE, which should be handled by trained staff only.

Storage: 4 °C, -20 °C

Storage Comment: Shipped at 4°C. Store at -20°C for one year. Avoid repeated freeze/thaw cycles.

Expiry Date: 12 months



#### Immunohistochemistry

**Image 1.** Formalin-fixed and paraffin embedded rat brain tissue labeled with Anti-IL-18 Polyclonal Antibody (ABIN669696), Unconjugated at 1:200, followed by conjugation to the secondary antibody and DAB staining