

Datasheet for ABIN669726
anti-ST14 antibody (AA 11-100)[Go to Product page](#)

4 Images

Overview

Quantity:	100 µL
Target:	ST14
Binding Specificity:	AA 11-100
Reactivity:	Human
Host:	Rabbit
Clonality:	Polyclonal
Conjugate:	This ST14 antibody is un-conjugated
Application:	Western Blotting (WB), ELISA, Immunohistochemistry (Paraffin-embedded Sections) (IHC (p)), Immunofluorescence (Cultured Cells) (IF (cc)), Immunofluorescence (Paraffin-embedded Sections) (IF (p)), Immunohistochemistry (Frozen Sections) (IHC (fro))

Product Details

Immunogen:	KLH conjugated synthetic peptide derived from human Matriptase
Isotype:	IgG
Cross-Reactivity:	Human
Predicted Reactivity:	Mouse,Rat
Purification:	Purified by Protein A.

Target Details

Target:	ST14
---------	------

Target Details

Alternative Name:	Matriptase (ST14 Products)
Background:	<p>Synonyms: HAI, MTSP1, SNC19, ARCI11, MT-SP1, PRSS14, TADG15, TMPRSS14, Suppressor of tumorigenicity 14 protein, Matriptase, Membrane-type serine protease 1, Prostamin, Serine protease 14, Serine protease TADG-15, Tumor-associated differentially-expressed gene 15 protein, ST14</p> <p>Background: Degrades extracellular matrix. Proposed to play a role in breast cancer invasion and metastasis. Exhibits trypsin-like activity as defined by cleavage of synthetic substrates with Arg or Lys as the P1 site. Involved in the terminal differentiation of keratinocytes through prostasin (PRSS8) activation and filaggrin (FLG) processing.</p>

Gene ID: 6768

UniProt: [Q9Y5Y6](#)

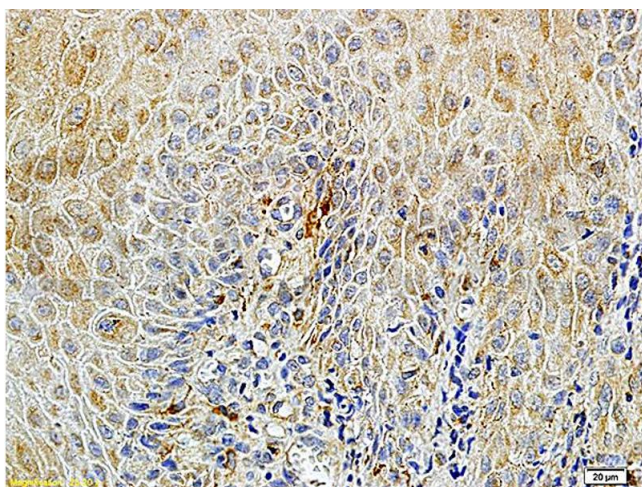
Application Details

Application Notes:	WB 1:300-5000 ELISA 1:500-1000 IHC-P 1:200-400 IHC-F 1:100-500 IF(IHC-P) 1:50-200 IF(IHC-F) 1:50-200 IF(ICC) 1:50-200
--------------------	---

Restrictions: For Research Use only

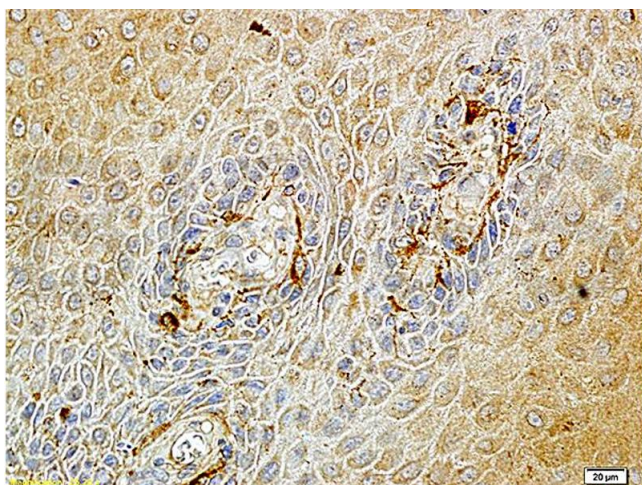
Handling

Format:	Liquid
Concentration:	1 µg/µL
Buffer:	0.01M TBS(pH 7.4) with 1 % BSA, 0.02 % Proclin300 and 50 % Glycerol.
Preservative:	ProClin
Precaution of Use:	This product contains ProClin: a POISONOUS AND HAZARDOUS SUBSTANCE, which should be handled by trained staff only.
Storage:	4 °C,-20 °C
Storage Comment:	Shipped at 4°C. Store at -20°C for one year. Avoid repeated freeze/thaw cycles.



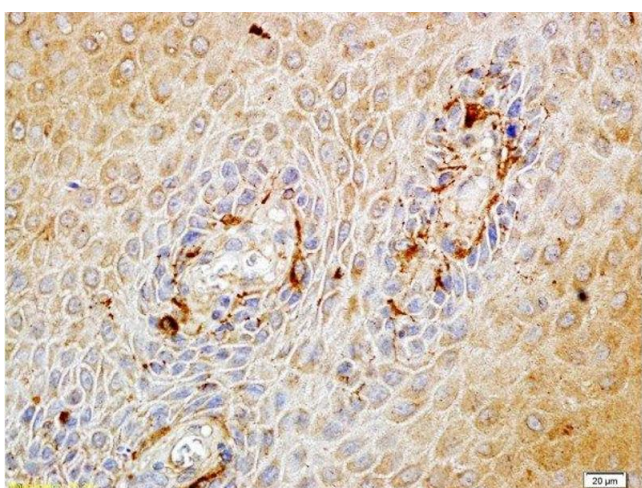
Immunohistochemistry

Image 1. Formalin-fixed and paraffin embedded human endometrium carcinoma labeled with Rabbit Anti-Matriptase Polyclonal Antibody (ABIN669726), Unconjugated at 1:100 followed by conjugation to the secondary antibody and DAB staining.



Immunohistochemistry

Image 2. Formalin-fixed and paraffin embedded human endometrium carcinoma labeled with Rabbit Anti-Matriptase Polyclonal Antibody (ABIN669726), Unconjugated at 1:100 followed by conjugation to the secondary antibody and DAB staining.



Immunohistochemistry (Paraffin-embedded Sections)

Image 3. Formalin-fixed and paraffin embedded human endometrium carcinoma labeled with Rabbit Anti-Matriptase Polyclonal Antibody, Unconjugated at 1:100 followed by conjugation to the secondary antibody and DAB staining.

Please check the [product details page](#) for more images. Overall 4 images are available for ABIN669726.