



Datasheet for ABIN669831  
**anti-CDKN1C antibody (AA 291-343)**



[Go to Product page](#)

2 Images

Overview

Quantity:	100 µL
Target:	CDKN1C
Binding Specificity:	AA 291-343
Reactivity:	Human, Mouse, Rat
Host:	Rabbit
Clonality:	Polyclonal
Conjugate:	This CDKN1C antibody is un-conjugated
Application:	ELISA, Flow Cytometry (FACS), Immunohistochemistry (Paraffin-embedded Sections) (IHC (p)), Immunofluorescence (Cultured Cells) (IF (cc)), Immunofluorescence (Paraffin-embedded Sections) (IF (p)), Immunohistochemistry (Frozen Sections) (IHC (fro))

Product Details

Immunogen:	KLH conjugated synthetic peptide derived from rat Cdkn1c
Isotype:	IgG
Cross-Reactivity:	Human, Mouse, Rat
Predicted Reactivity:	Cow, Sheep
Purification:	Purified by Protein A.

Target Details

Target:	CDKN1C
---------	--------

## Target Details

---

Alternative Name: [CDKN1C \(CDKN1C Products\)](#)

---

Background: Synonyms: p57, Kip2, p57KIP2  
Background: This gene is imprinted, with preferential expression of the maternal allele. The encoded protein is a tight-binding, strong inhibitor of several G1 cyclin/Cdk complexes and a negative regulator of cell proliferation. Mutations in this gene are implicated in sporadic cancers and Beckwith-Wiedemann syndrome, suggesting that this gene is a tumor suppressor candidate. Three transcript variants encoding two different isoforms have been found for this gene. [provided by RefSeq, Oct 2010].

---

Gene ID: 246060

---

Pathways: [Cell Division Cycle](#), [Dopaminergic Neurogenesis](#)

---

## Application Details

---

Application Notes: ELISA 1:500-1000  
FCM 1:20-100  
IHC-P 1:200-400  
IHC-F 1:100-500  
IF(IHC-P) 1:50-200  
IF(IHC-F) 1:50-200  
IF(ICC) 1:50-200

---

Restrictions: For Research Use only

---

## Handling

---

Format: Liquid

---

Concentration: 1 µg/µL

---

Buffer: 0.01M TBS( pH 7.4) with 1 % BSA, 0.02 % Proclin300 and 50 % Glycerol.

---

Preservative: ProClin

---

Precaution of Use: This product contains ProClin: a POISONOUS AND HAZARDOUS SUBSTANCE, which should be handled by trained staff only.

---

Storage: 4 °C, -20 °C

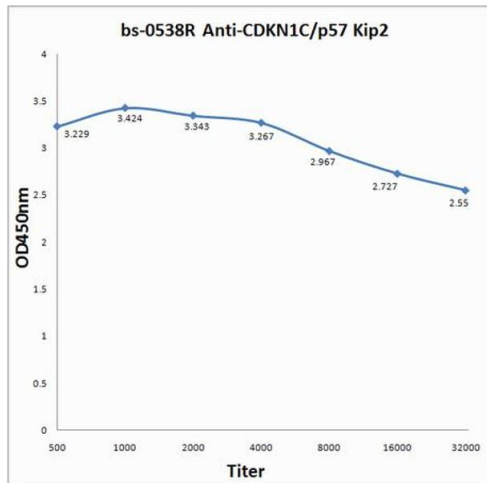
---

Storage Comment: Shipped at 4°C. Store at -20°C for one year. Avoid repeated freeze/thaw cycles.

---

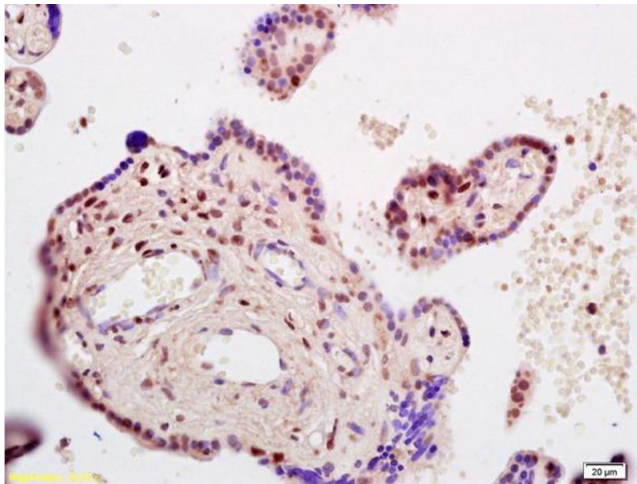
Expiry Date: 12 months

---



### ELISA

**Image 1.** Antigen: 0.2 µg/100 µL Primary: Antiserum, 1:500, 1:1000, 1:2000, 1:4000, 1:8000, 1:16000, 1:32000; Secondary: HRP conjugated Goat-Anti-Rabbit IgG at 1: 5000; TMB staining; Read the data in MicroplateReader by 450



### Immunohistochemistry

**Image 2.** Formalin-fixed and paraffin embedded human placenta labeled with Rabbit Anti CDKN1C/p57 Kip2 Polyclonal Antibody, Unconjugated (ABIN669831) at 1:200 followed by conjugation to the secondary antibody and DAB staining