

Datasheet for ABIN669876  
**anti-CAMK2B antibody (AA 1-100)**

## 5 Images

[Go to Product page](#)

## Overview

Quantity:	100 µL
Target:	CAMK2B
Binding Specificity:	AA 1-100
Reactivity:	Human, Mouse, Rat
Host:	Rabbit
Clonality:	Polyclonal
Conjugate:	This CAMK2B antibody is un-conjugated
Application:	Western Blotting (WB), ELISA, Immunohistochemistry (Paraffin-embedded Sections) (IHC (p)), Immunohistochemistry (Frozen Sections) (IHC (fro))

## Product Details

Immunogen:	KLH conjugated synthetic peptide derived from human CaMK2
Isotype:	IgG
Specificity:	The peptide immunogen is highly conserved between CaMKII alpha, beta, gamma, and delta
Cross-Reactivity:	Human, Mouse, Rat
Purification:	Purified by Protein A.

## Target Details

Target:	CAMK2B
Alternative Name:	CaMK2 ( <a href="#">CAMK2B Products</a> )

## Target Details

Background: Synonyms: CaMK2 beta, CaMK2 gamma, CaMK2 delta, CAMK2G, Calcium/calmodulin dependent protein kinase CaM kinase II beta, Calcium/calmodulin dependent protein kinase II beta, Calcium/calmodulin dependent protein kinase IIB, Calcium/calmodulin dependent protein kinase type II beta chain, CAM 2, CaM kinase II beta chain, CaM kinase II beta subunit, CAM2, CAMK 2, CAMK 2B, CaMK II beta subunit, CaMK II subunit beta, CAMK2, CaMK2 beta, CAMK2B, CAMKB, CaMKII beta subunit, CaMKIIB, MGC29528, Proline rich calmodulin dependent protein kinase, CaM kinase II, Calcium/calmodulin-dependent protein, CaM kinase II gamma subunit, CaM-kinase II gamma chain, CaM kinase II delta subunit, CaM-kinase II delta chain, CAM2, CAMK, CAMK-II, CAMK2D, CAMK2G, CAMK2N2, CAMKD, CAMKG, KCC2B, kinase CaMK2-beta. Background: CaM-kinase II (CAMK2) is a prominent kinase in the central nervous system that may function in long-term potentiation and neurotransmitter release. Member of the NMDAR signaling complex in excitatory synapses it may regulate NMDAR-dependent potentiation of the AMPAR and synaptic plasticity

Gene ID: 815816817818

Pathways: [WNT Signaling](#), [Interferon-gamma Pathway](#), [Myometrial Relaxation and Contraction](#), [Regulation of G-Protein Coupled Receptor Protein Signaling](#), [Smooth Muscle Cell Migration](#), [Regulation of long-term Neuronal Synaptic Plasticity](#)

## Application Details

Application Notes: WB 1:300-5000  
ELISA 1:500-1000  
IHC-P 1:200-400  
IHC-F 1:100-500

Restrictions: For Research Use only

## Handling

Format: Liquid

Concentration: 1 µg/µL

Buffer: 0.01M TBS( pH 7.4) with 1 % BSA, 0.02 % Proclin300 and 50 % Glycerol.

Preservative: ProClin

Precaution of Use: This product contains ProClin: a POISONOUS AND HAZARDOUS SUBSTANCE, which should be handled by trained staff only.

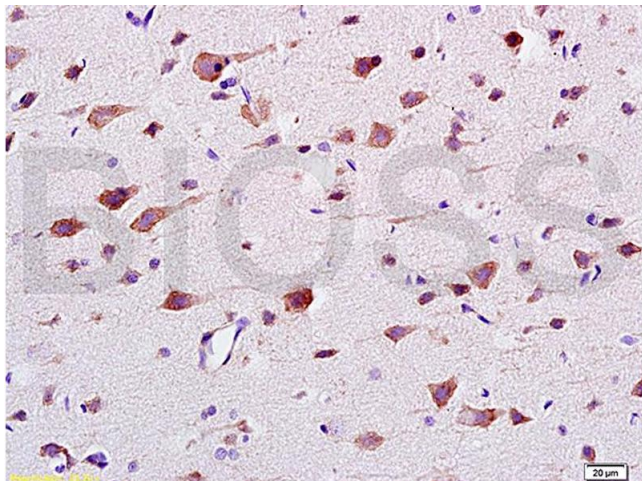
## Handling

Storage: 4 °C, -20 °C

Storage Comment: Shipped at 4°C. Store at -20°C for one year. Avoid repeated freeze/thaw cycles.

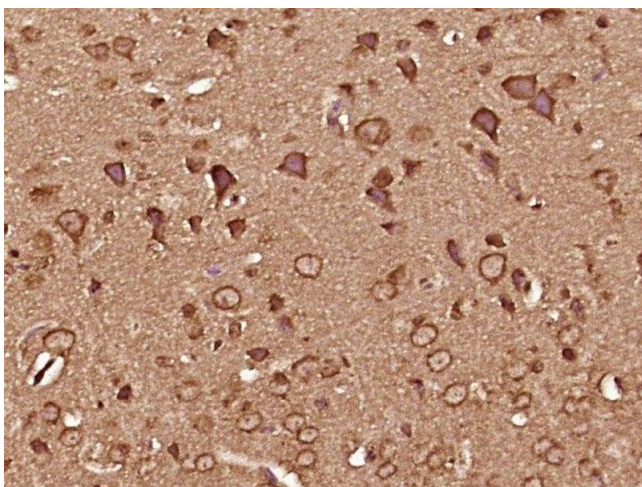
Expiry Date: 12 months

## Images



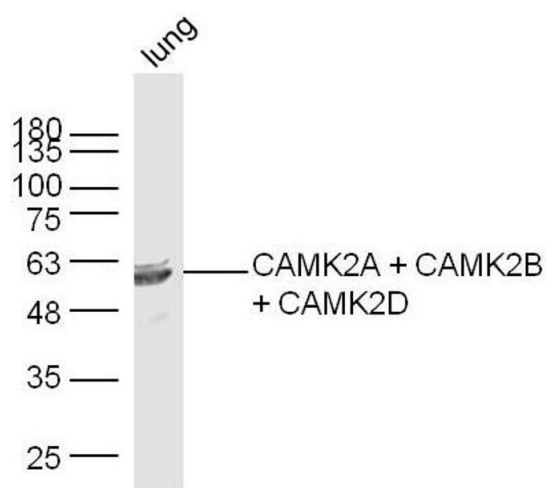
### Immunohistochemistry

**Image 1.** Formalin-fixed and paraffin embedded: rat brain tissue labeled with Anti-CaMK2b Polyclonal Antibody (ABIN669876), Unconjugated at 1:200 followed by conjugation to the secondary antibody and DAB staining



### Immunohistochemistry (Paraffin-embedded Sections)

**Image 2.** Paraformaldehyde-fixed, paraffin embedded mouse brain tissue, Antigen retrieval by boiling in sodium citrate buffer (pH6.0) for 15min, Block endogenous peroxidase by 3% hydrogen peroxide for 20 minutes, Blocking buffer (normal goat serum) at 37°C for 30min, Antibody incubation with CaMK2 Polyclonal Antibody, Unconjugated (bs-0541R) at 1:400 overnight at 4°C, followed by a conjugated secondary antibody and DAB staining.



**Western Blotting**

**Image 3.** Mouse lung lysates probed with CAMK2A + CAMK2B + CAMK2D Polyclonal Antibody, Unconjugated at 1:300 dilution and 4°C overnight incubation. Followed by conjugated secondary antibody incubation at 1:10000 for 60 min at 37°C.

Please check the [product details page](#) for more images. Overall 5 images are available for ABIN669876.