

Datasheet for ABIN6698808

**Goat anti-Chicken IgG Antibody (DyLight 488)**[Go to Product page](#)**1** Image

## Overview

Quantity:	100 µg
Target:	IgG
Reactivity:	Chicken
Host:	Goat
Clonality:	Polyclonal
Conjugate:	DyLight 488
Application:	Western Blotting (WB), FLISA, Fluorescence Microscopy (FM)

## Product Details

Purpose:	Chicken IgG (H&L) Antibody Dylight™ 488 Conjugated
Immunogen:	Chicken IgG, whole molecule
Isotype:	IgG
Characteristics:	goat anti-Chicken IgG DyLight™488 Conjugated Antibody, goat anti-Chicken IgG Antibody DyLight™488 Conjugation, Chicken Secondary Antibody, goat anti-Chicken IgY Antibody DyLight™488, Anti-Chicken IgG DyLight Antibody generated in goat detects chicken IgY.
Labeling Ratio:	5.3

## Target Details

Target:	IgG
Abstract:	<a href="#">IgG Products</a>

## Target Details

---

Target Type:	Antibody
Background:	Secreted as part of the adaptive immune response by plasma B cells, immunoglobulin G constitutes 75 % of serum immunoglobulins. Immunoglobulin G binds to viruses, bacteria, as well as fungi and facilitates their destruction or neutralization via agglutination (and thereby immobilizing them), activation of the compliment cascade, and opsonization for phagocytosis. The whole IgG molecule possesses both the F(c) region, recognized by high-affinity Fc receptor proteins, as well as the F(ab) region possessing the epitope-recognition site. Both heavy and light chains of the antibody molecule are present.

## Application Details

---

Application Notes:	FLISA_Dilution: >1:20,000 IF_Microscopy_Dilution: >1:5,000 Western_Blot_Dilution: >1:10,000 Other: User Optimized
Comment:	Anti-Chicken IgG DyLight488 has been tested by western blot. This product is designed for immunofluorescence microscopy, fluorescence based plate assays (FLISA) and fluorescent western blotting. This product is also suitable for multiplex analysis, including multicolor imaging, utilizing various commercial platforms. The emission spectra for this DyLight™ conjugate match the principle output wavelengths of most common fluorescence instrumentation.
Restrictions:	For Research Use only

## Handling

---

Format:	Lyophilized
Reconstitution:	Reconstitution Volume: 100 µL Reconstitution Buffer: Restore with deionized water (or equivalent)
Concentration:	1.0 mg/mL
Buffer:	0.02 M Potassium Phosphate, 0.15 M Sodium Chloride, pH 7.2, 10 mg/mL Bovine Serum Albumin (BSA) - Immunoglobulin and Protease free, 0.01 % (w/v) Sodium Azide
Preservative:	Sodium azide
Precaution of Use:	This product contains Sodium azide: a POISONOUS AND HAZARDOUS SUBSTANCE which should be handled by trained staff only.

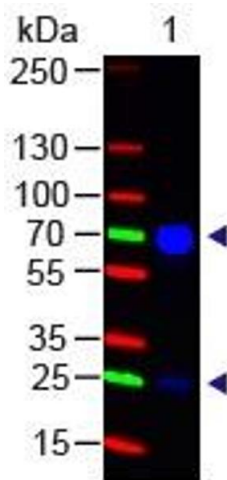
## Handling

Storage: 4 °C, -20 °C

Storage Comment: Store conjugated secondary antibody at 4° C prior to restoration. For extended storage aliquot contents and freeze at -20° C or below. Avoid cycles of freezing and thawing. Centrifuge product if not completely clear after standing at room temperature. Conjugated Secondary Antibody is stable for several weeks at 4° C as an undiluted liquid. Dilute only prior to immediate use.

Expiry Date: 12 months

## Images



### Western Blotting

**Image 1.** Chicken IgG (H&L) Antibody 488 Conjugated Western Blot. Western Blot of Goat anti-Chicken Antibody 488 Conjugated Lane 1: Chicken IgG Load: 50 ng per lane Secondary antibody: Chicken IgG (H&L) Antibody 488 Conjugated at 1:1,000 for 60 min at RT Block: ABIN925618 for 30 min at RT Predicted/Observed size: 72 and 28 kDa, 72 and 28 kDa